



INSTRUCTION

INTERCOOLER UPGRADE

BMW E92 335i 2007-



Parts Included:

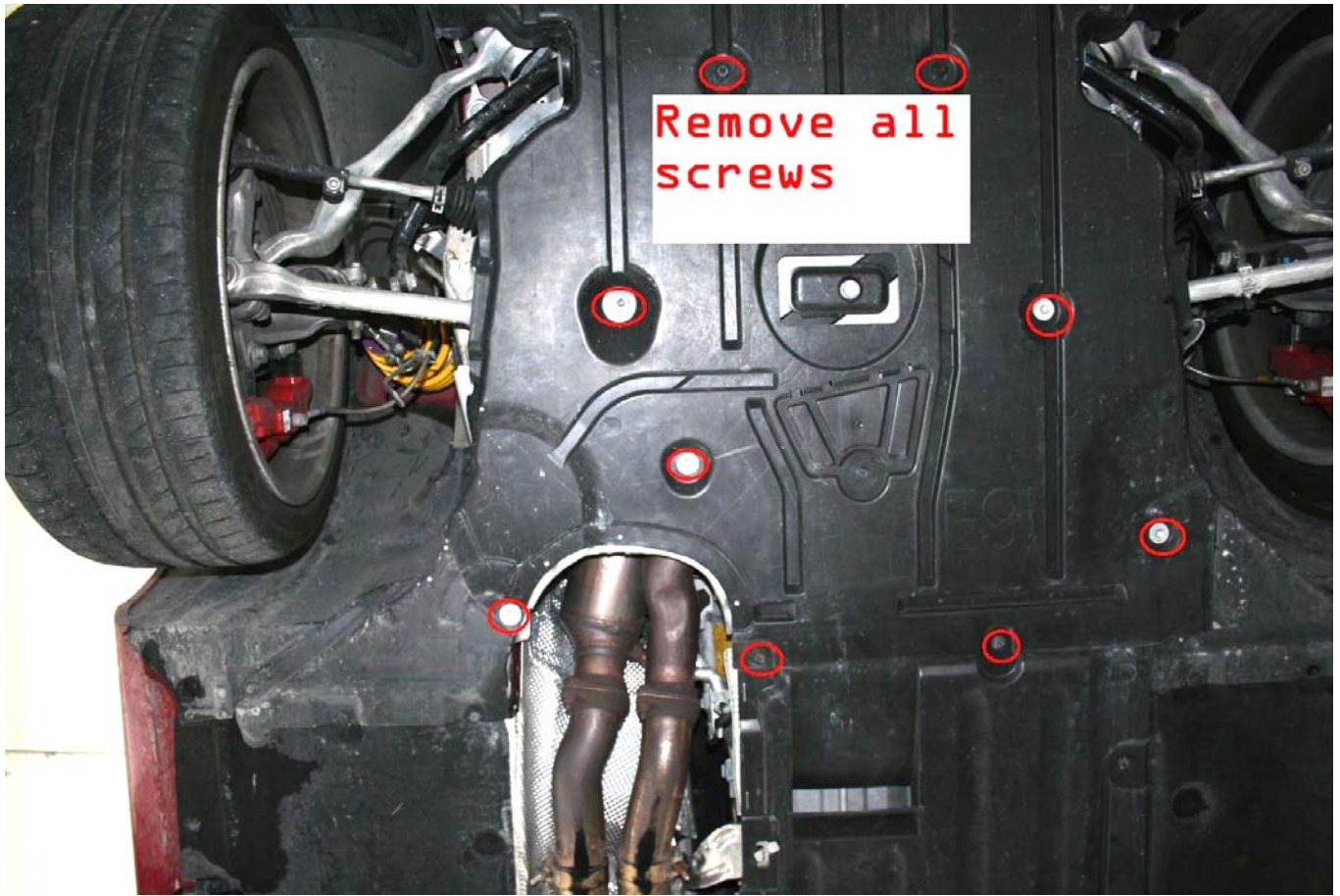
- Intercooler
- Shroud with seals
- Left and right side pipes with hoses
- 3 Silicone Hoses (2.5" x 3 "
- 1 Silicone Hose 90degree 2.5 " elbow
- 8 Hoseclamps # 40
- Left and right side mounting brackets
- 4 Hex bolts (8 & 90mm)
- 8 Hex nuts
- Intercooler under panel.

Installation:

It is recommended to use a lift to help perform installation or use of professional grade jack stands to properly raise and secure car

Tools:

- Basic metric sockets
- Ratchet handle & extensions
- Screwdrivers – Phillips and Flat head
- Torx bit # 25
- Die grinder or air saw
- Tube of Super Glue



Remove under panel from belly of car. All screws have to be removed.



NOTE: Not all screws are shown in picture above.



Remove the front bumper cover side screws located under the headlamps and inner fender.
Remove screws from under panel (Pork Chop).

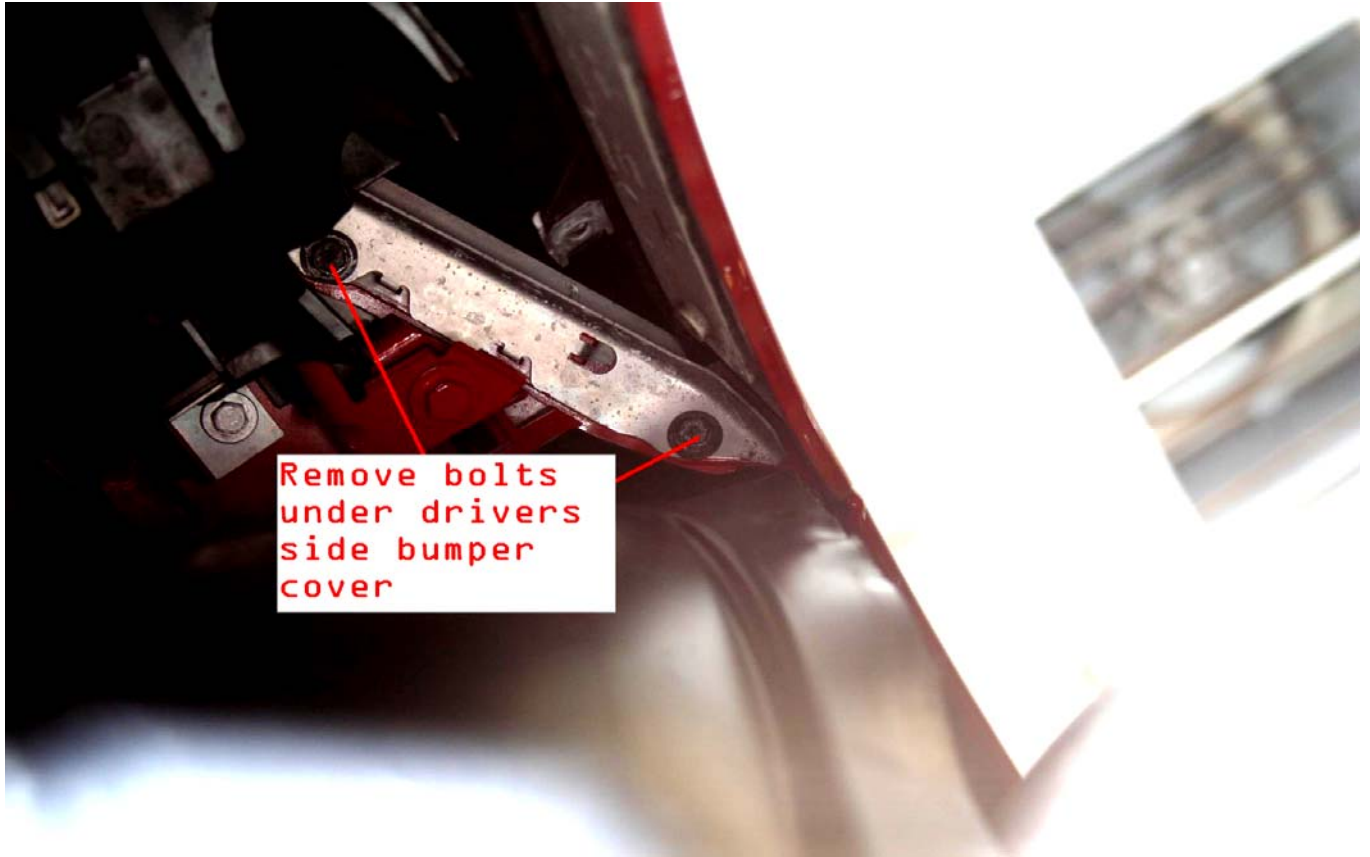
SEE PICS



Remove screws from passenger side inner fender.



Remove screws for driver's side inner fender.

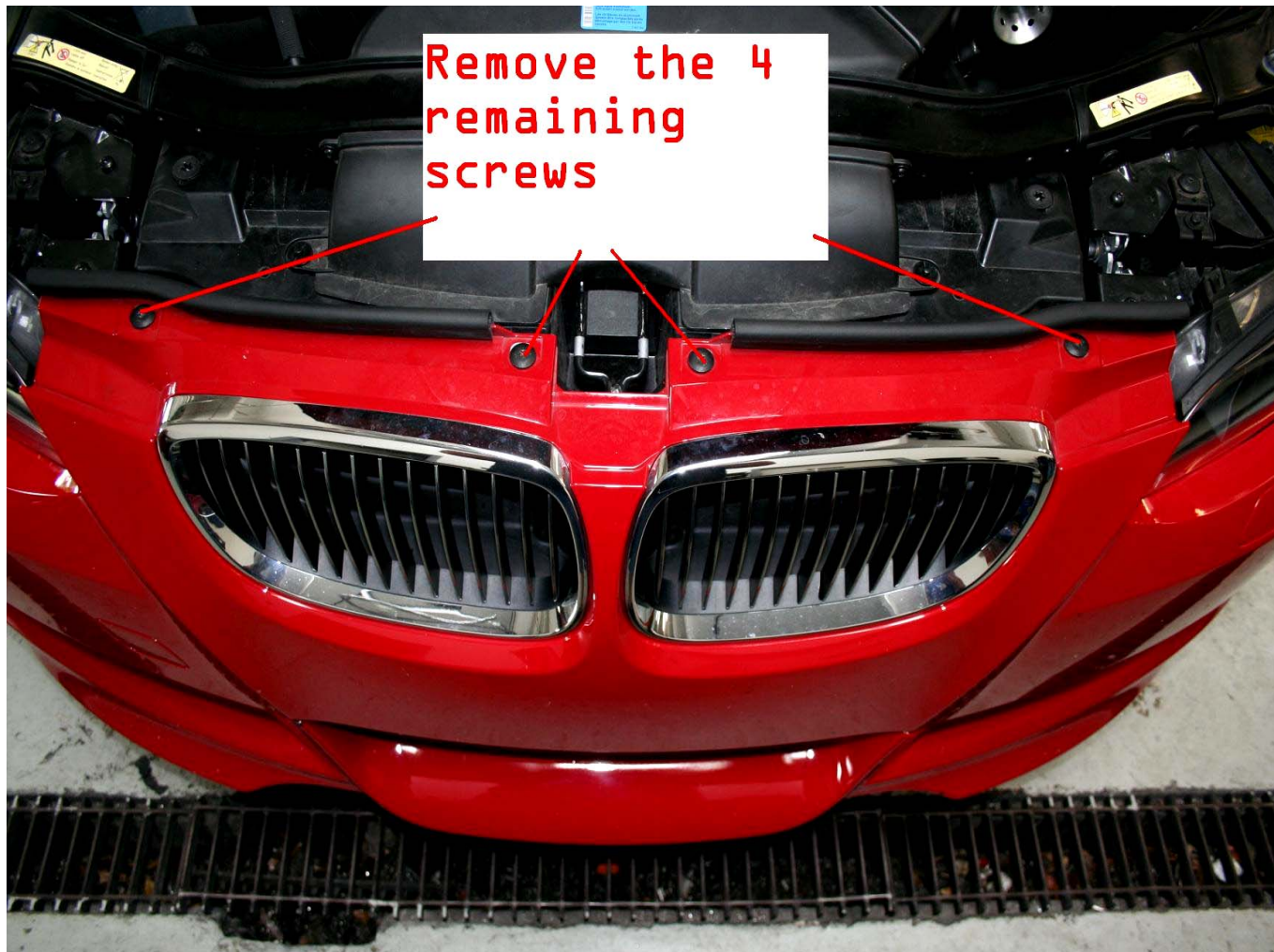


Remove 2 bolts that support front bumper on driver's side.

**2 screws to remove
bumper from fender**



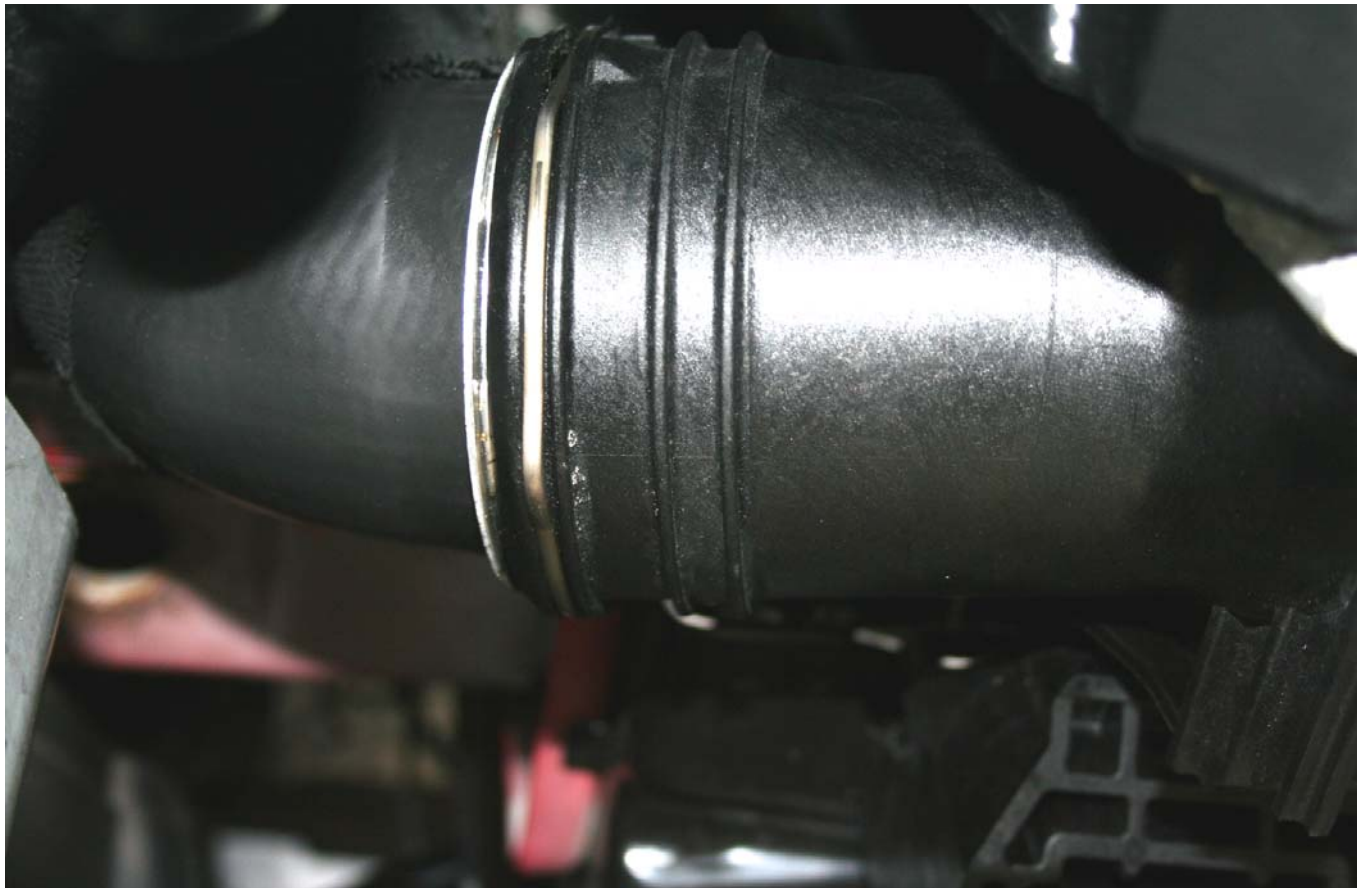
Repeat bolt removal for passenger side.



Remove the 4 remaining screws at the top.



Unplug wiring to fog lamps. Then remove bumper cover.



Pull release clips for left and right intercooler pipes. Pull back pipes away from intercooler.



Remove mounting screws on the left and right side of the intercooler.

These screw will be used back to mount the intercooler under panel.



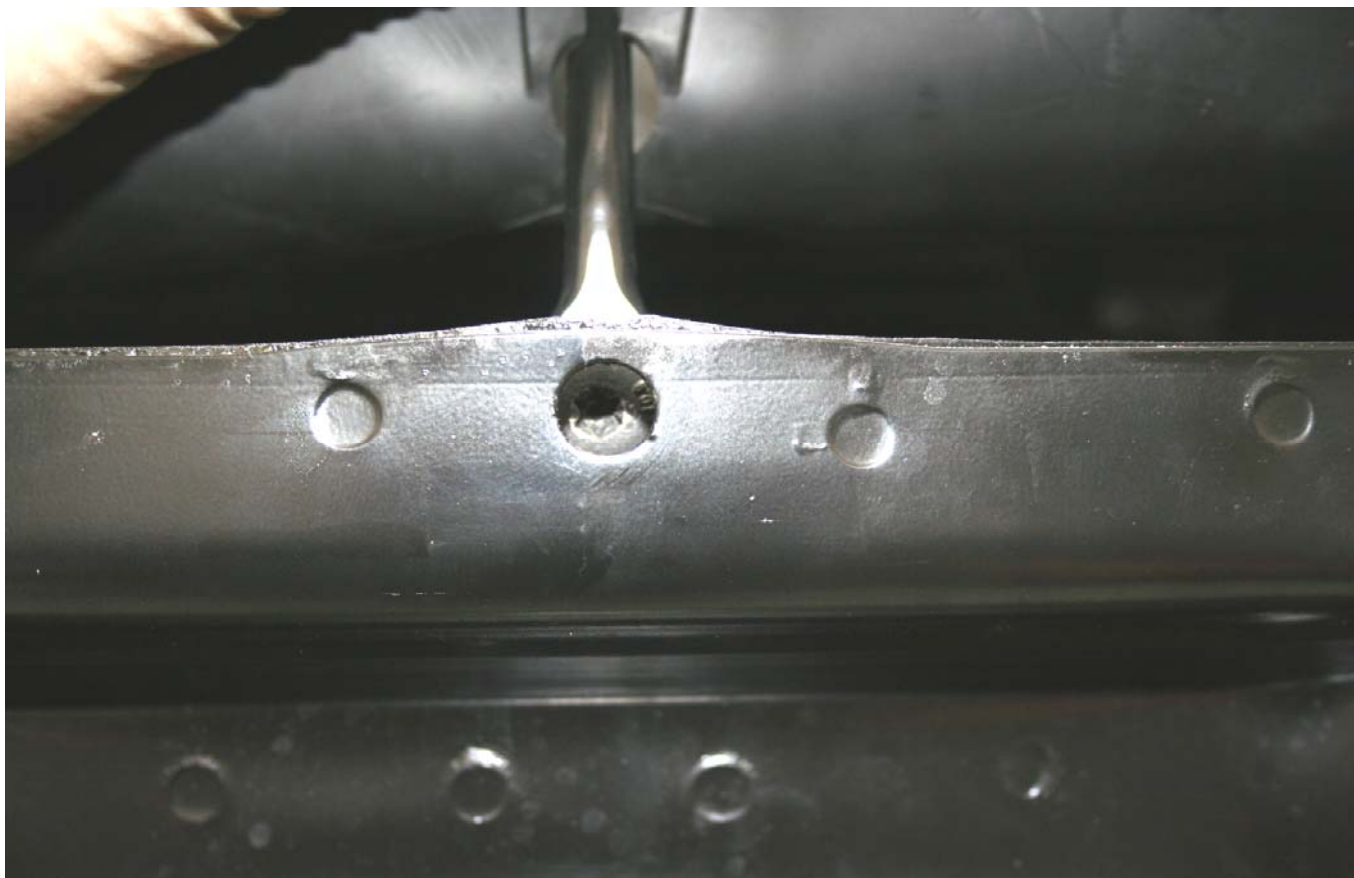
Intercooler removed.



The factory plastic shroud will need to be modified for the new intercooler. The modification can be done in the car but the bumper has to be lowered to get space to cut the shroud.
Loosen the 2 bumper supports (4 bolts).



Bumper also has a center support brace that will have to be loosened.



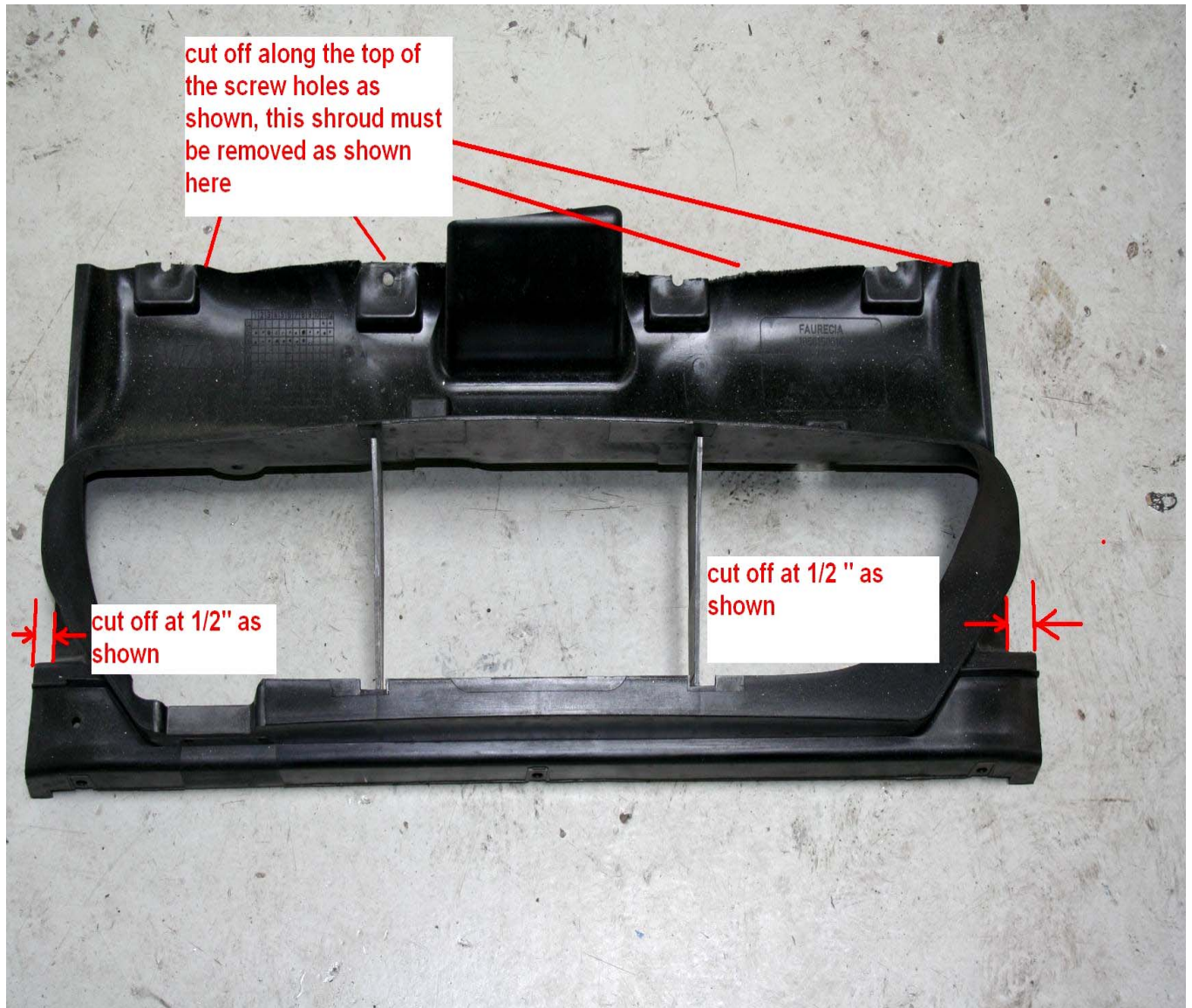
Remove bolt for center support brace. This will allow you to hang the bumper forward in order to cut the shroud.



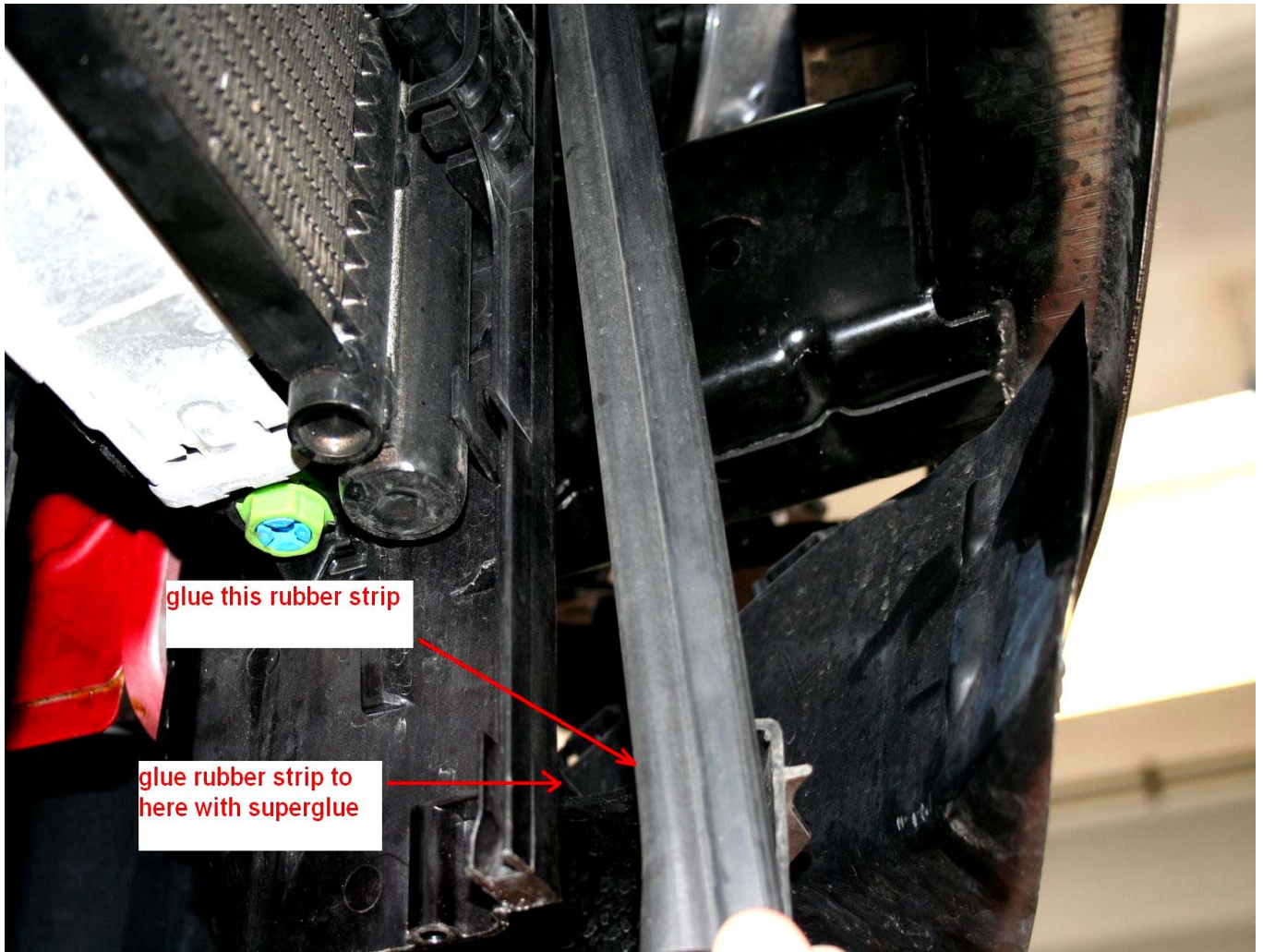
These are the areas to be cut. Hang down the bumper to get enough space to cut of the bottom half of the shroud.



Bottom section has to be removed.



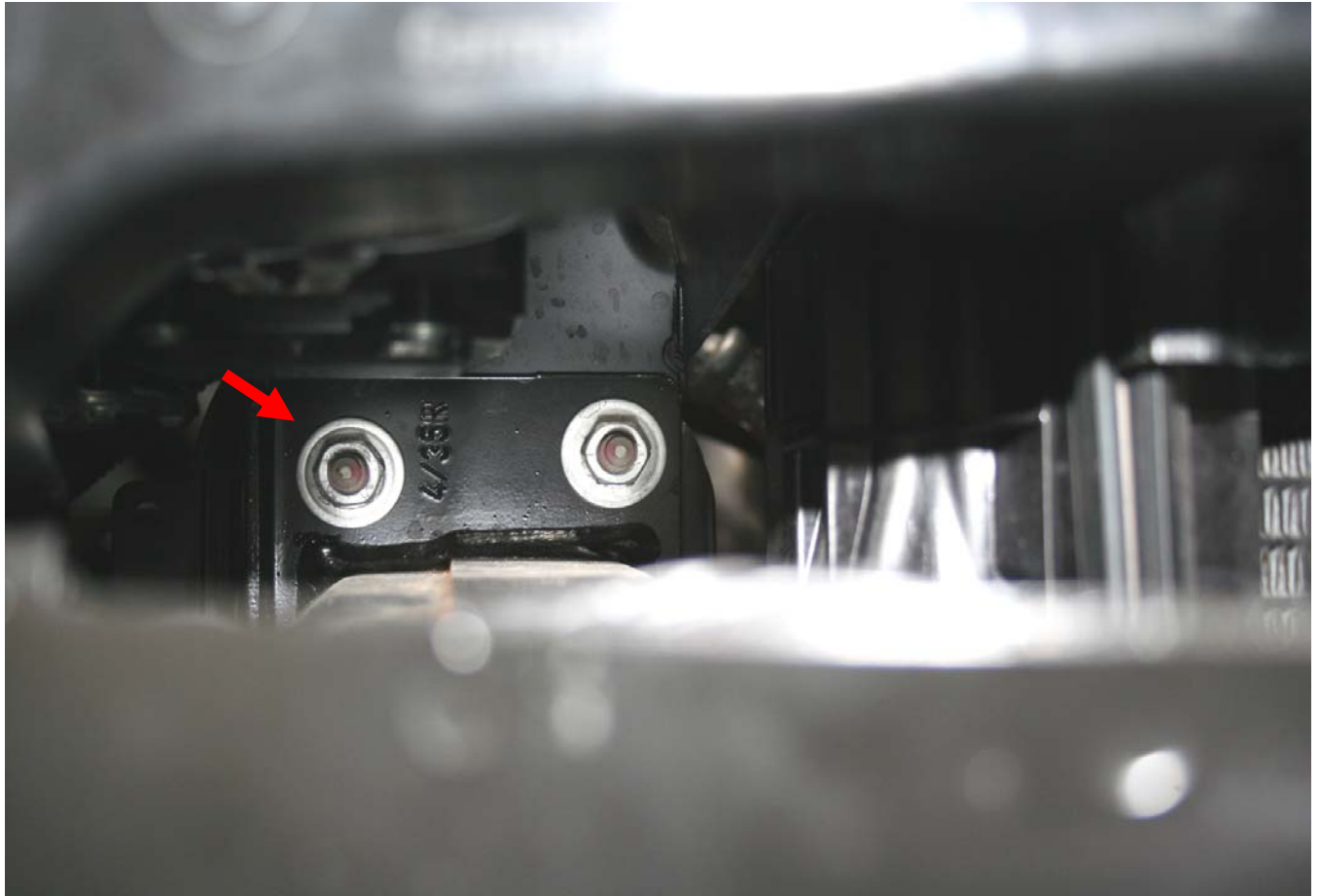
Cut shroud as shown in picture (use die grinder or air saw).
At base of shroud measure at least 1/2 an inch from side of cowl and cut.



Rubber strips hanging down need to be glued to the support. This strip was used to seal the original IC.



Use super glue to attach rubber strips on both sides of the car.



Re-mount bumper supports and tighten nuts to (18 ft-lbs)



Remove original IC pipes from both sides. A small die grinder (Dremel) will have to be used to cut clamps.



Right side pipe (passenger). New pipes will be supplied with the AA intercooler.



Un bolt left and right side horns, behind each horn will be the support holes for the new intercooler.



Mount intercooler support brackets using 90mm long bolts and nut.



Brackets must slope back towards radiator when mounted. (Swap left to right if they face forward)

Remount the horns.



Install driver's side pipe with elbow (Straight pipe towards intercooler).



Install passenger side pipe (bend towards intercooler).



Active Autowerke intercooler comes assembled with air shroud.
Remove mounting bolts that secures shroud and bracket to intercooler.
Slide intercooler and shroud together in between pre mounted support brackets and replace bolts and tighten.



Attach driver's side pipe from Blow off valve to intercooler.



**new
supplied
pipe from
Active**

Attach passenger side pipe from turbo. Tighten all clamps.



Install under panel plate using back original screws.



Reinstall bumper cover and under panels.

Thank you for purchasing one of the finest performance upgrades made for the BMW 335i Twin Turbo.

If you have any questions or concerns, just give us a call at 305.233.9300. Through your inputs and concerns, this is how Active Autowerke tries to improve on the minor details.