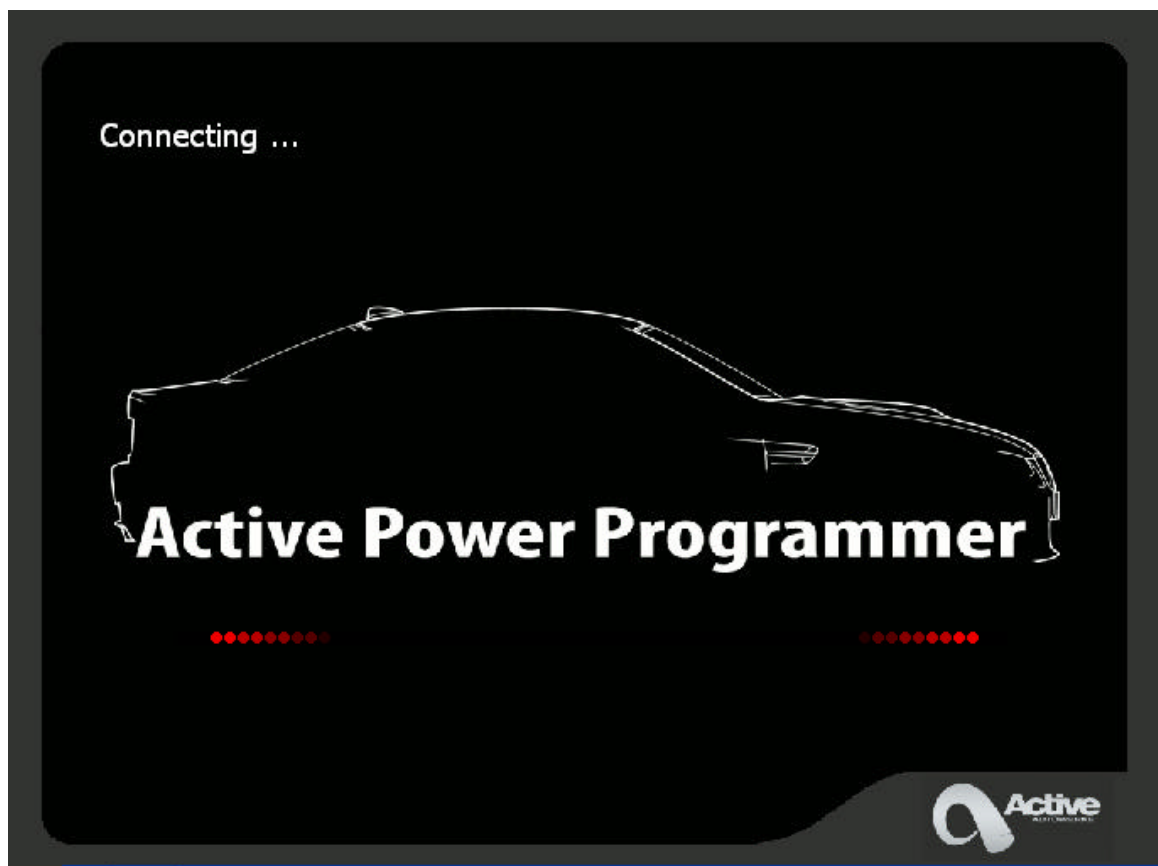


Active Power Programmer

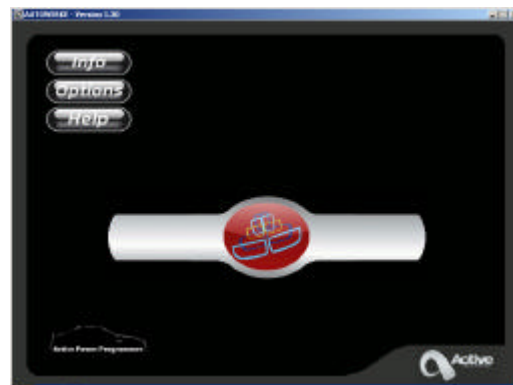
Instructions



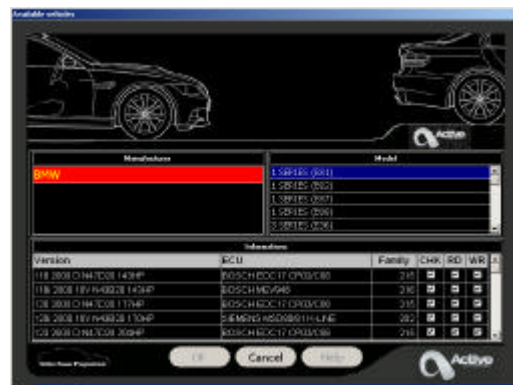
1. Connect a battery charger to the vehicle.
2. Connect the Active Power Programmer to the OBDII port
3. Open the Active Power Programmer by clicking on its icon. You will see the following screen



4. Next click on the button in the center of the screen



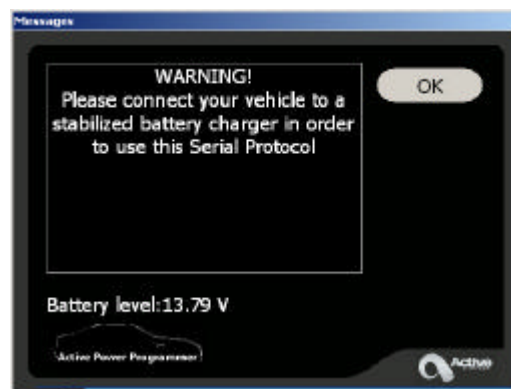
5. Next using the menu, select the Model and ECU type for the vehicle you are going to flash. Then Click 'OK'. On some models, it will now ask you to choose between 'K-Line' or 'CAN'. Most cars 2006 and newer will use the 'CAN' option. Don't worry if you select the wrong selection, the software will let you know later and you can come back and select the correct one.



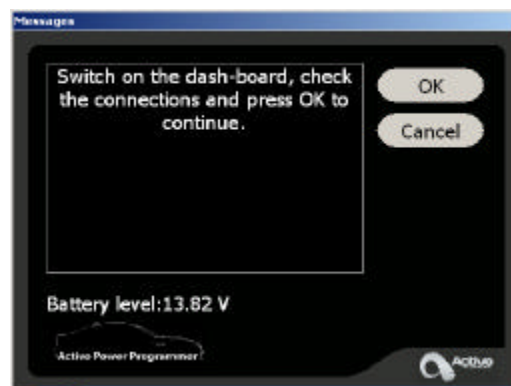
6. Next chose 'Reading' then click on 'Select'



7. Next make sure you have the Battery Charger turned on



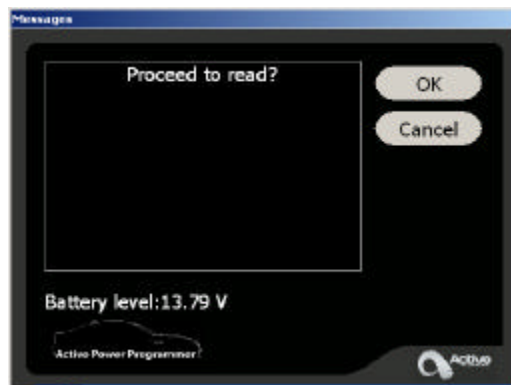
8. Next turn on the Ignition Key on or press the start button to turn on the car. Do not start the vehicle. Then click 'OK'



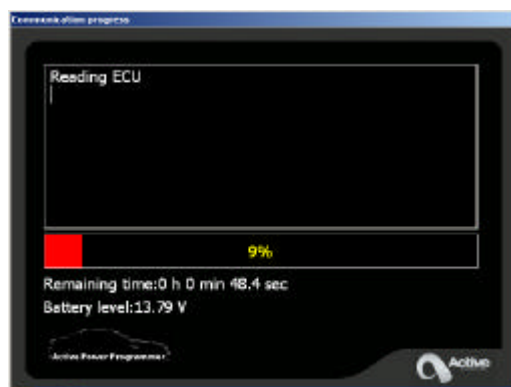
9. The information screen will come up and give you the Vehicle Information. Click 'OK' to continue



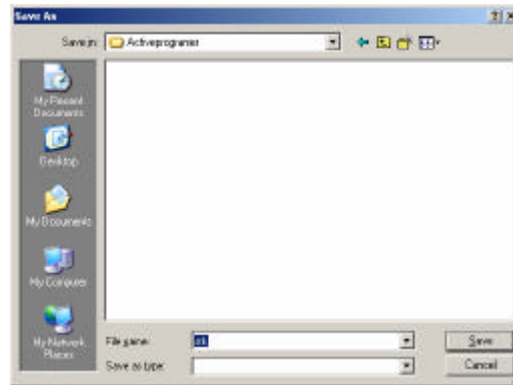
10. Next it will ask you to proceed to read. Click 'OK'



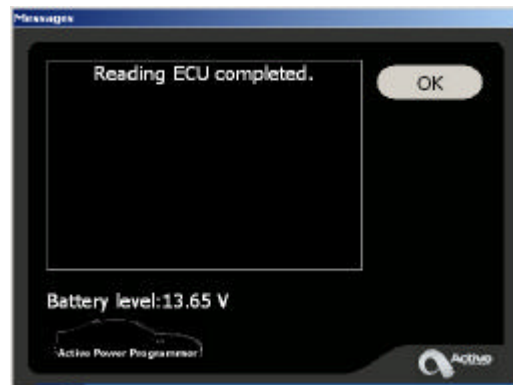
11. It will take up to 60 minutes to read the file out of the car. Make sure nobody disturbs the car during reading or writing to the ecu.



12. Once it completes reading the file, it will ask you to save the file. We recommend you create a separate directory for each customer and save their original file permanently in case you need to put the customer's car back to original at a later date. Now that you have saved the original file for the car, email it with a description of the modifications to your sales associate.

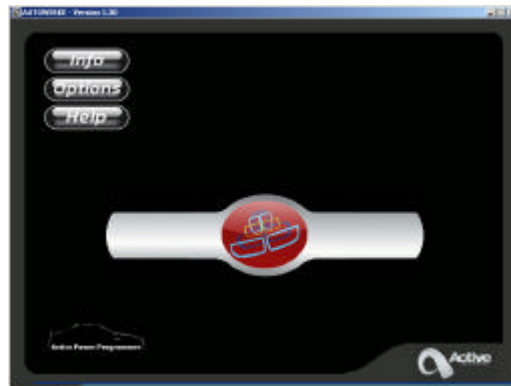


13. Next you will see a screen telling you that the Read was successful

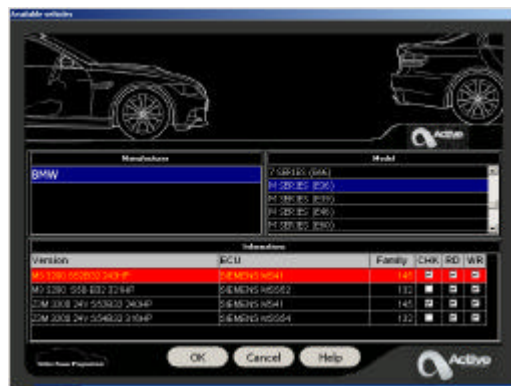


14. At this point you can turn off the car and disconnect the Active Power Programmer. You should receive the Tuned file via e-mail shortly after we receive the STK file from you.

15. **Programming the tuned file.** Once you have received the new tuned file from us, transfer it to the directory you created for the customer. Now reconnect the battery charger and the Active Power Programmer to the OBDII port and launch the program. Click on the center button to continue



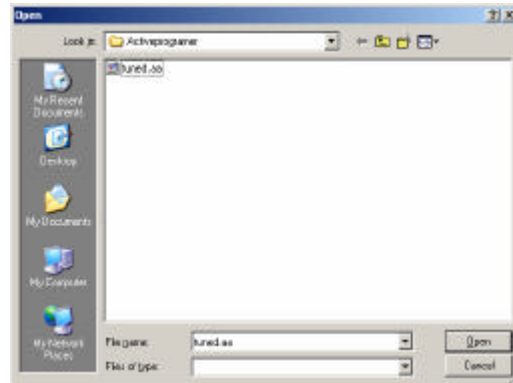
16. Next select the Model and engine type then Click 'OK'



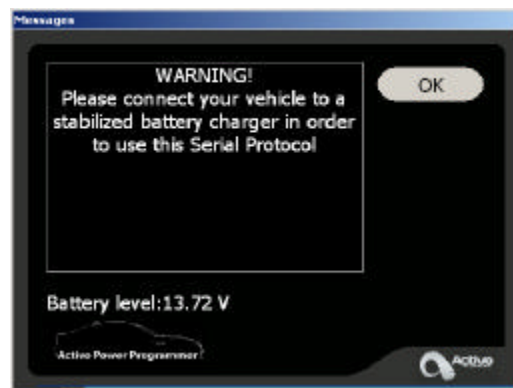
17. Now select 'Writing' and 'Select'



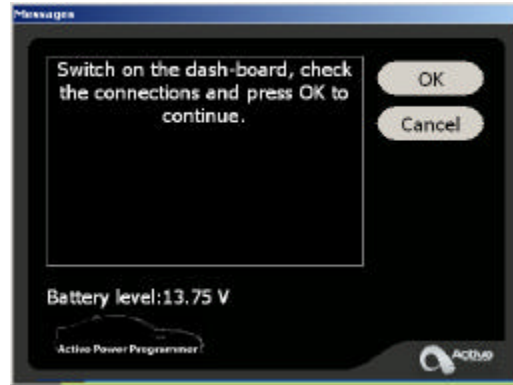
18. Next browse to the location that you saved the tuned file in and select it. Then click 'Open'. The file should have the extension .AA Please make sure you chose the correct file. Programming a DME with the wrong file can permanently destroy the DME so double check that you are using the file created for this customer



19. Next make sure the battery charger is on and Click 'Ok'



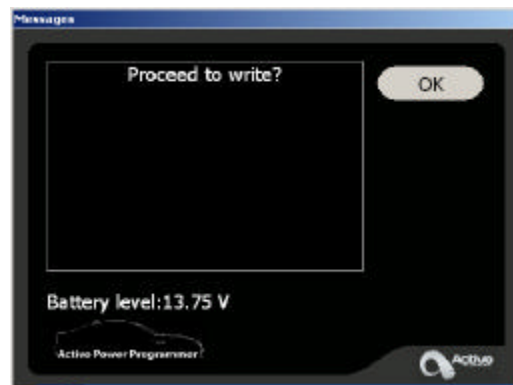
20. Next turn on the Ignition Key on or press the start button to turn on the car. Do not start the vehicle. Then click 'OK'



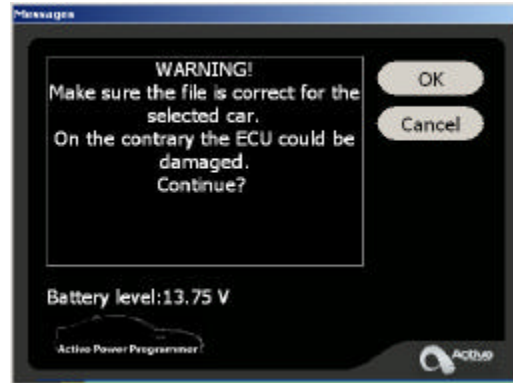
21. The information screen will come up and give you the Vehicle Information. Click 'OK' to continue



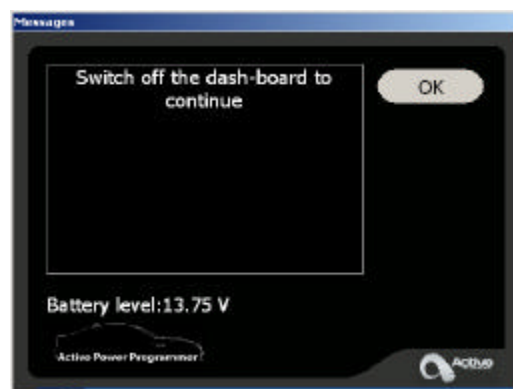
22. Next it will ask to 'Proceed to Write' click 'Ok'



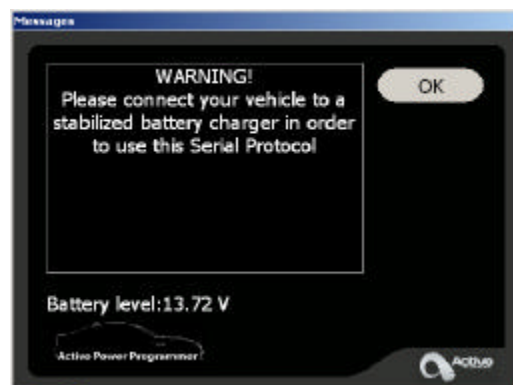
23. Next click 'OK' to the warning. Make sure you are using the correct file!!



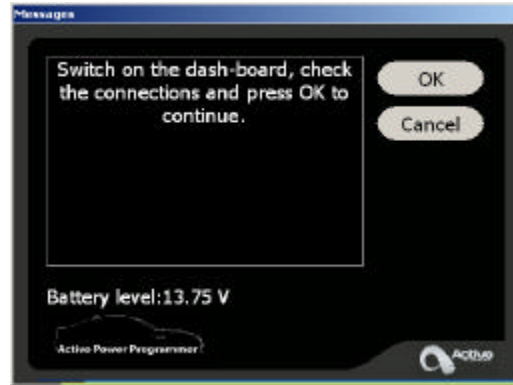
24. Next switch the ignition back off. Then Click 'Ok'



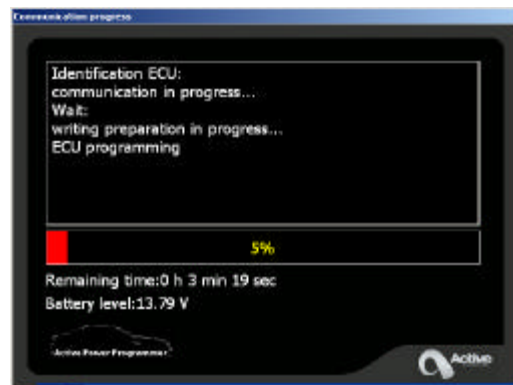
25. Click 'Ok' to the battery charger warning.



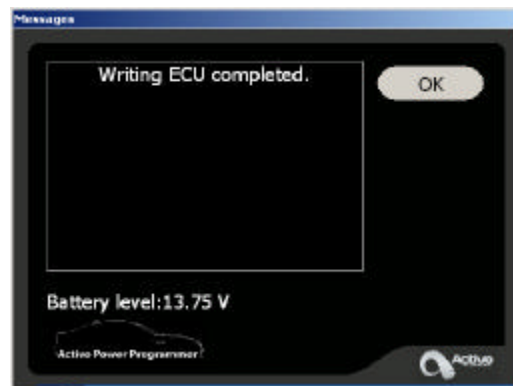
26. Next turn on the Ignition Key on or press the start button to turn on the car. Do not start the vehicle. Then click 'OK'



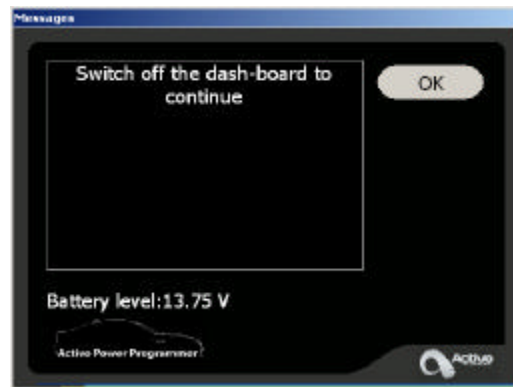
27. Next the Active Power Programmer will begin to program the new tuned file into the DME. This will take up to 60 minutes to complete. Please do not disturb the car while it is programming.



28. Once the write is complete the following screen will be displayed. Click 'Ok'



29. Now Switch the car off for at least 20 seconds.



30. Now you can exit the Active Power Programmer software and remove the battery charger from the car. Now start the vehicle and verify that is running correctly. If you have any 'service engine soon', 'check engine' or 'transmission' error light. Use an appropriate scan tool to clear the errors. This is normal on most automatic or steptronic vehicles