

ACTIVE THROTTLE BOOSTER INSTRUCTION

The Active Throttle Booster was developed and controlled considering the necessary safety requirements.

The product must be installed properly to ensure a proper function and avoid danger for person or things.

Please read this installation guide and carefully following all the instructions.

Step 1. Turn off the ignition and remove the key.

Step 2. Wait at least 5 minutes before attempting installation.

** Note: Install kit in a waterproof and vibration less area. Do not shorten or extend wire harness.

Step 3. Find the gas pedal sensor located in the footwell directly above the gas pedal.

Step.4 Detach the plug from the gas pedal.

Step 5. Attach GP1 harness to the gas pedal (A).

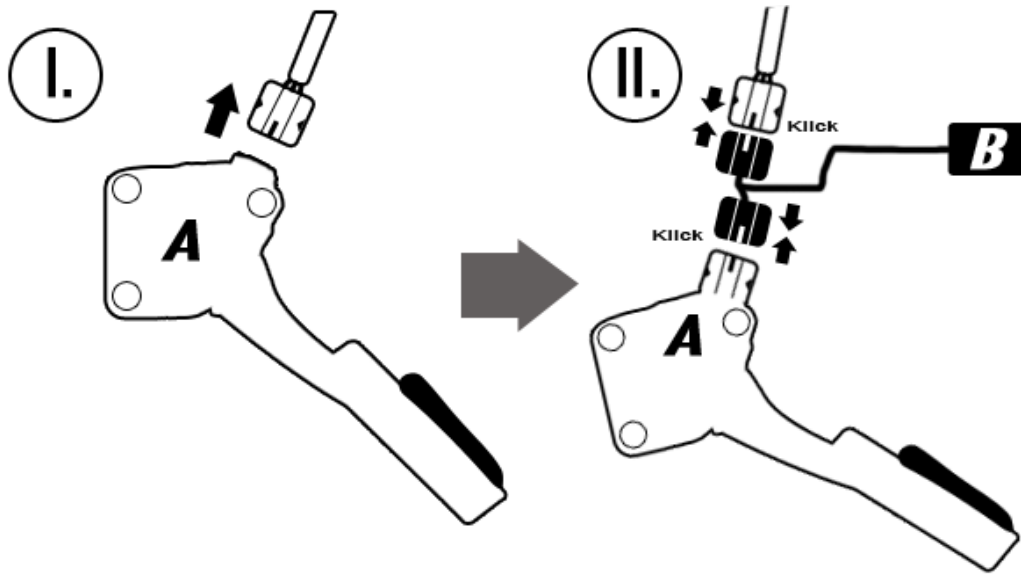
Step 6. Connect the GP1 plug to the car harness.

Step 7. Install the GP1 and the switch in a proper location, make sure harness does not interfere with foot pedals.

** Note : Please follow illustration below, for proper adaption make sure to give the car full throttle after starting the engine while in park mode.

A = ACCELERATOR

B = GP1



There are 3 positions of the Active Throttle Booster.

Position 1. Clear light (stock mode)

Position 2. Green Light (40 % increase)

Position 3. Red Light (80% increase aggressive mode) Take caution when in this mode as throttle is very sensitive and not recommended to be driven in heavy bumper to bumper traffic.