



Simon 3 Installation and Flashing guide R2

The Simon 3 is a tool (diagnostic interface) used to read and write your vehicle's Engine Control Unit (ECU), to start the process you will need to download the software from the following link:

<http://store.activeautowerke.com/pages/downloads>

Program is designed to run on most Windows platforms however later platforms such as 8, 8.1 and 10 require software verification which will prevent the software from automatically downloading.

Laptops running these platforms should disable the driver enforcement before starting installation, (**Simon cable will not be recognized**). Links for disabling drivers are provided below for Windows 8, 8.1 and 10. **WARNING:** If installation is started before disabling, program will have to be reinstalled (due to possible corruption of program)

Drivers: <http://www.isunshare.com/windows-8/how-to-disable-or-enable-driver-signature-enforcement-in-windows-8-and-8.1.html>

[http://acer.custhelp.com/app/answers/detail/a_id/38289/~windows-10%3A-disable-signed-driver-enforcement](http://acer.custhelp.com/app/answers/detail/a_id/38289/~/windows-10%3A-disable-signed-driver-enforcement)

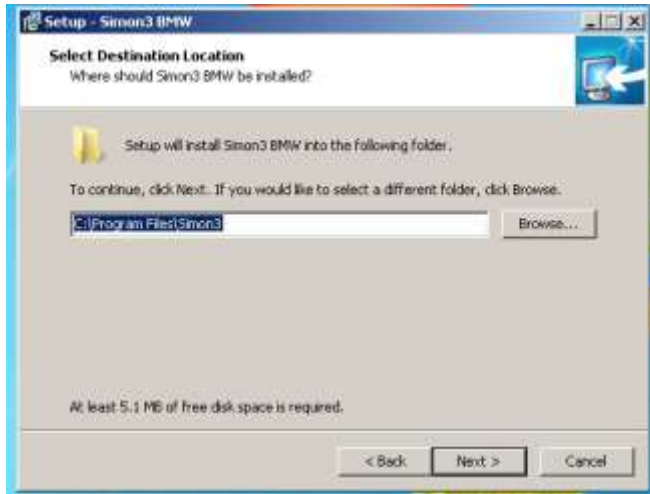
Simon 3 link:

<http://store.activeautowerke.com/pages/downloads>

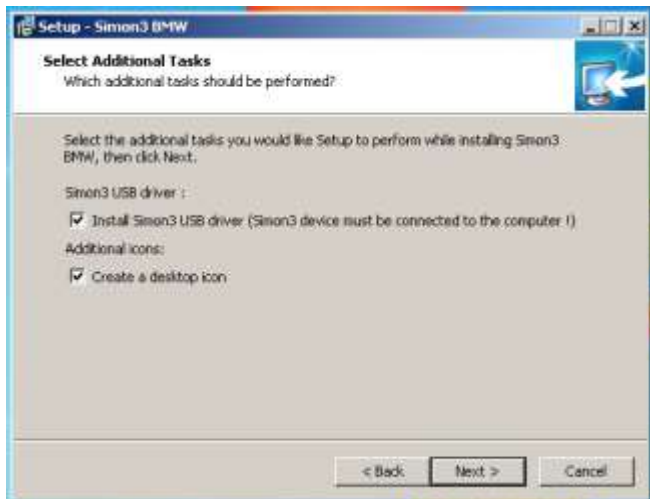
Installing the software



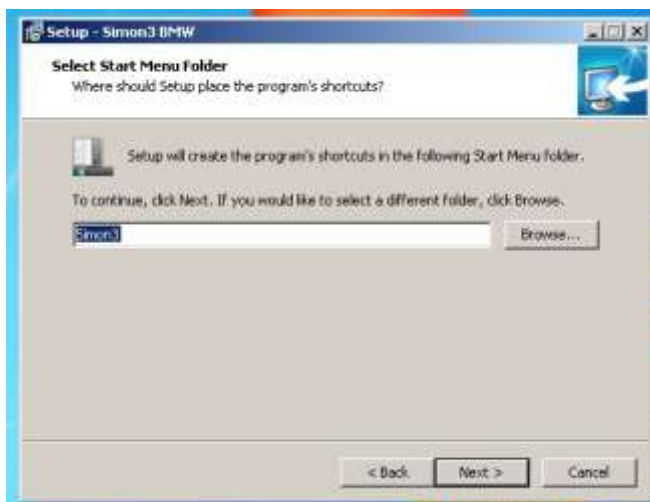
- Under download go to Simon 3 and open link, after it downloads (May ask to run), program will open to this page. Click Next to start the installation.



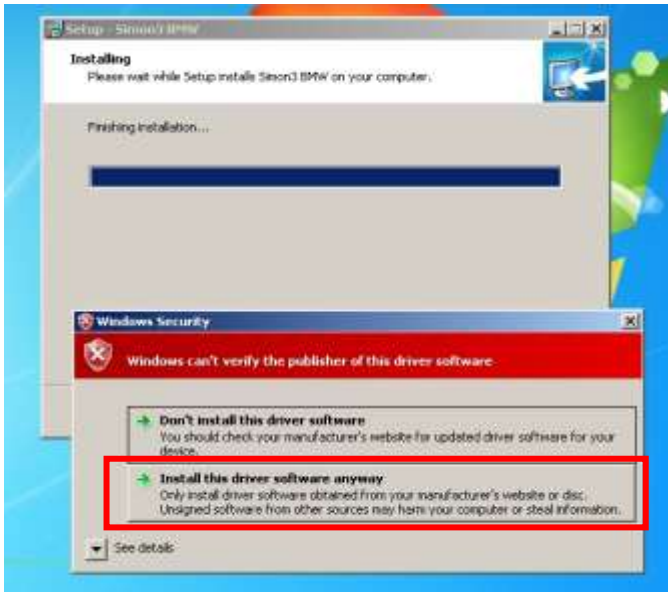
- Leave the default folder path pre-load in the installation wizard and click next.



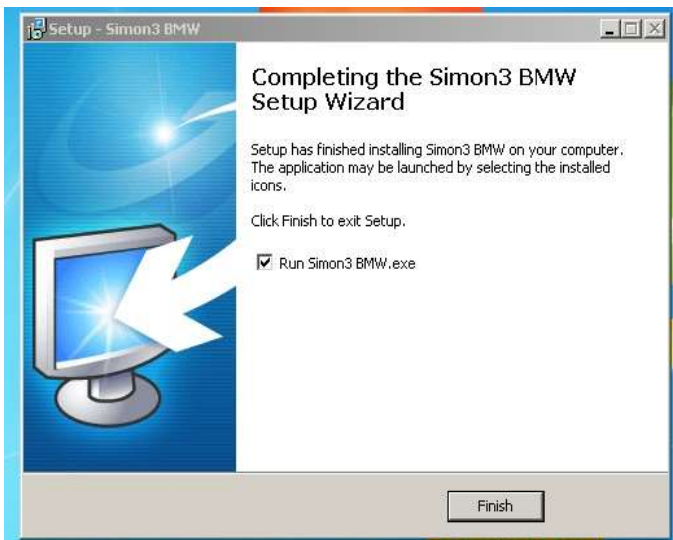
- Attach Simon 3 ODBII interface USB plug to the laptop and click next to install the proper drivers.



- A Simon 3 desktop shortcut should be created. Click next to continue.



- If you are running Windows 8, 8.1 or 10 and have disabled the drivers, you should see a Windows security prompt at the end of the install. Answer: "Install this driver software anyway"
- **Warning:** If drivers were not disabled you will not get this prompt and will therefore have restart the install by first disabling the drivers.



- Installation is now complete. Double click on Simon 3 icon to open.

Reading the car



- Attach Simon 3 to cars OBDII port. The welcome screen contains a description of what this tool can do.
- Before starting make sure Laptop has the minimum requirements. (see below)
- Make sure car battery will support install for the duration of flash by adding suitable battery charger to system. (Minimum 12.5 volts 10 amps continuous stable voltage).
- **Warning: Do not use jumper cables or second car (will create voltage spikes)**



- Simon 3 minimum requirements:
 - ✓ 400 MHz CPU
 - ✓ 200 Mb RAM memory
 - ✓ 400 Mb free hard drive space



- Turn on ignition to second position (dash board has lights)
 - ✓ Turn off A/C and radio.
 - ✓ Leave driver's door open to prevent ECU from going to sleep.
 - ✓ Press next to start.
 - ✓ Program will identify ECU.





- Menu contains :
 - ✓ **Reading the ECU memory:** Read function only. Will record (download) memory. Cannot alter software.
 - ✓ **Program ECU memory:** This is the flash (program/upload) function, after program has been modified.
 - ✓ **The recovery ECU memory:** is an emergency backup function, back to stock.

- ✓ **Diagnostics:** Ability to read, clear and save trouble codes.
- ✓ **Software options:** Not recommended at this time.



- To read the ECU memory the software will ask you where to save the file (e.g. Desktop) and suggest a name:
- **Example:** ECU_type_SoftwareNumber_vinNumber.data.bmw.org (this will be the original file from the car). You can rename for easy identification:
John_Smith_E92M3_stock

- Click Save and wait for the procedure to end. The reading of the file may take anywhere from 3 minutes to 90 minutes depending on the ECU type. **Warning: Leave the driver's door open to prevent the ECU from going to sleep and make sure power supply can maintain 12.5 volts for at least 120 minutes.**



Send the file by email to your AA sales representative and CC the software department as well at softwaresupport@activeautowerke.com.... usually modified tune will be emailed back within 24 hours.

Please send as much information as possible as it will aid in the tune and turnaround time.

Customer Name and Last Name: example John Smith

VIN: 4USBT53565LX01536

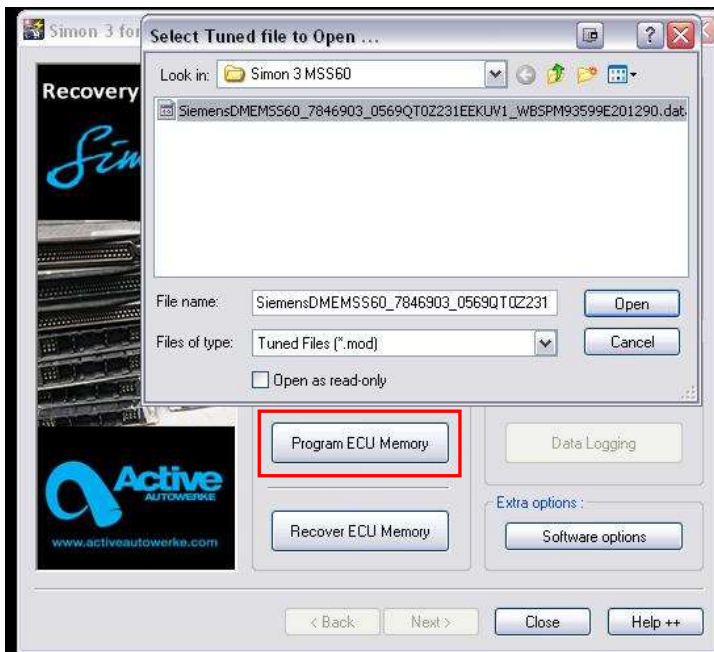
Year: 2010

Model: E92 M3

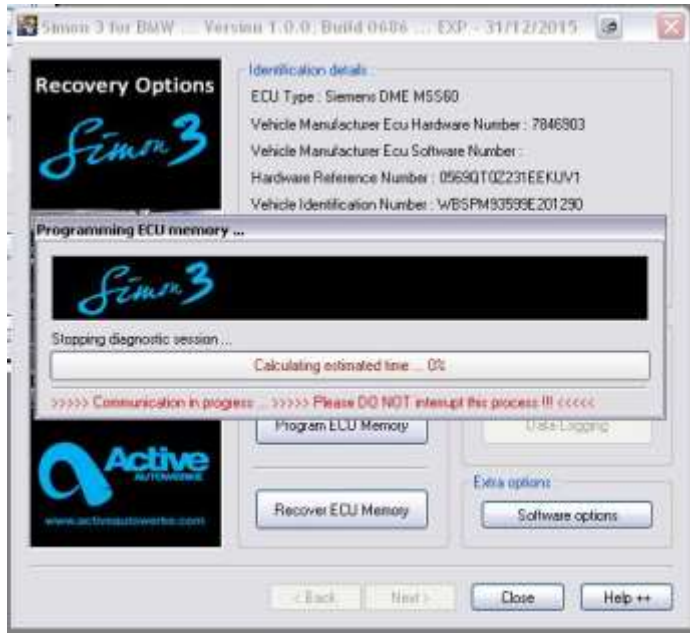
Fuel Octane Gas rating: 93 AKI, 98 RON

Modifications on the car: AA air filter, cat back Exhaust.

Flashing the car



- You will receive back (.mod) files, which is the new tuned software. To upload file back to ECU, choose Program ECU Memory option and transfer (open) file back (from email/desktop, etc.) to Simon program. Remember to:
 - ✓ Put back battery charger on the car (Minimum 12.5 volts 10 amps). **Do not use a trigger or battery jumper (not a stable voltage source).**
 - ✓ Ignition key in second position: (dash lights on)
 - ✓ Turn off the AC, radio and all accessories.
 - ✓ Leave the driver's door open to prevent the ECU from going to sleep.



- The bar graph should start moving indicating the writing procedure has begun, wait until finish (100% complete)
- Turn off ignition for at least 15 seconds.
- Start the car.

Diagnostics

After installing a new tune it is highly suggested that any old trouble codes (check engine light) and adaptations should be erased. Simon 3 has the ability to do both.

Clearing the Adaptations is a way to make sure you are taking full advantage of the new software. The ECU has certain peripheral settings that are not altered in the retune but adapts to the conditions of the engine and therefore would have the settings based on the old tune. It is quicker to erase the adaptations (set back to zero) than to wait for it to readapt (200-500 miles). Old adaptation settings maybe conflicting to the new software and therefore cause drivability issues.

