



Installation Manual:

G87 Single Mid-Pipe

DISCLAIMER

The below information assumes that the purchaser has signed the “Off Road Use Only Waiver” form that can be found at the following url:

<http://images.activeautowerke.com/Installation%20PDF%27s/vehiclewaiver2.pdf>

The above waiver must be signed and submitted to Active Autowerke prior to purchase of the performance products.

Prior to beginning the installation process – please read the following instruction manual carefully and in full. Ensure that all necessary parts are available to perform the complete installation.

By the Installation of this Active Autowerke product – you are agreeing to all terms and conditions stated below:

- ☐ The purchaser assumes full responsibility for the use of these products on their automobiles which may or may not conform to applicable laws and regulations for on road or highway use.
- ☐ The purchaser acknowledges that Active Autowerke states that products are intended for off road or race track use only
- ☐ The purchaser agrees that Active Autowerke shall bear no responsibility in ensuring that their automobiles are compliant with State, Federal, Provincial, or local ordinances and emissions authorities.
- ☐ The waiver of compliance shall cover all past and future purchases from Active Autowerke
- ☐ Active Autowerke assumes no responsibility for damages occurring from misuse, abuse, improper installation, improper operation, lack of responsible care, or part incompatibility issues.

WARRANTY INFORMATION

Included with your purchase of Active Autowerke premium performance products is a warranty card. This warranty card states the following:

Active Autowerke provides a limited one-year warranty against material defects and workmanship for one year (starting from the date of the original purchase). Warranty only applies to the original purchaser and is non-transferrable.

Exceptions to the warranty include, but are not limited to “wear and tear” such as brake rotors, brake pads, flywheels and clutches and “garage sale” items (of which deposits and sales are FINAL and non-refundable).

Warranty will be VOID if:

- ☐ The product is abused, misused, or improperly maintained
- ☐ Repairs have been made or attempted by anyone other than an authorized Active Autowerke repair or maintenance facility
- ☐ Repairs are required due to normal “wear and tear” and regular usage
- ☐ Alterations or Modifications are made to the original Active Autowerke Product[®]
- ☐ The Product is classified as “Consumable”
- ☐ The Product has been involved in an automobile accident or there is excessive damage to the product not caused by material workmanship or material defects

The warranty is limited to repairs and/or replacements of the product or part(s) found to be defective without additional charges to the purchaser. Active Autowerke reserves the right to refund the complete purchase price for the defective item ONLY and will not be held liable for losses or damages arising from the defect.

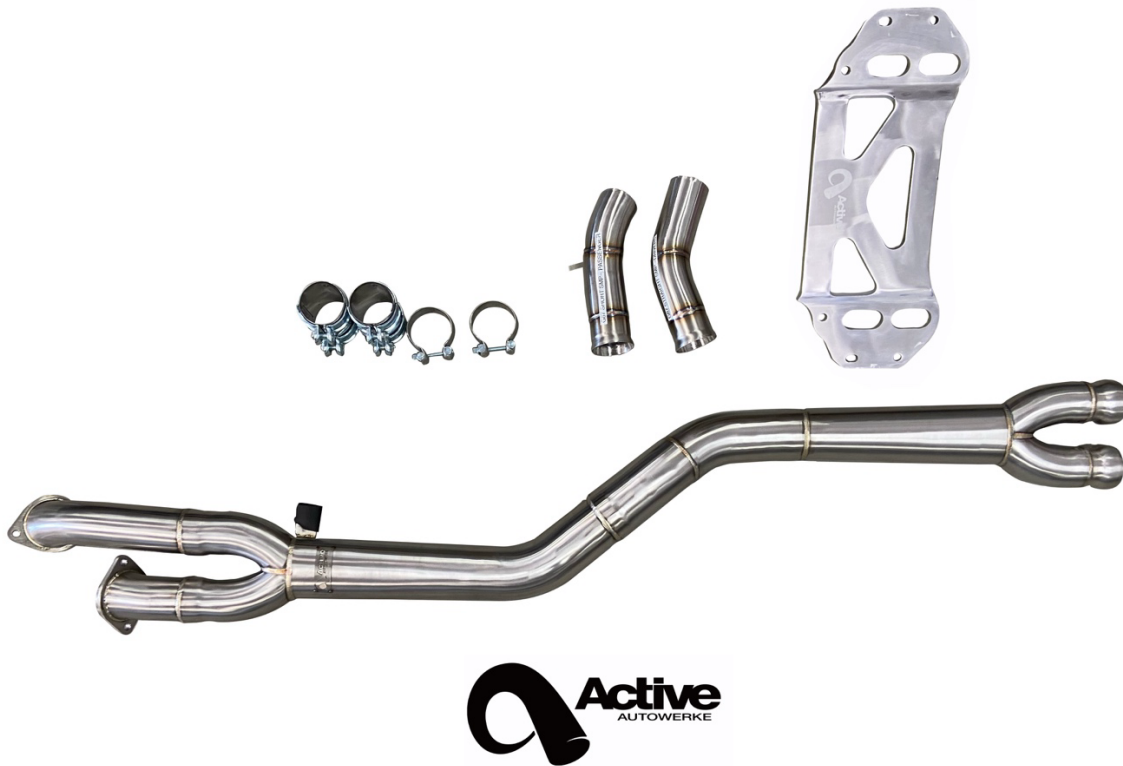
If a part component from Active Autowerke product, system, kit is found to be defective – this warranty shall only apply to the defective part or component and shall not require Active Autowerke to repair, replace, or refund the complete Active Autowerke product, system or kit.

MINIMUM REQUIRED TOOLS

- ☐ Lubrication Spray
- ☐ File
- ☐ Sawzall
- ☐ 13mm socket
- ☐ 15mm socket
- ☐ 13mm crow foot
- ☐ Socket handle and extension



G87 Single Mid-Pipe Kit (Included Parts):

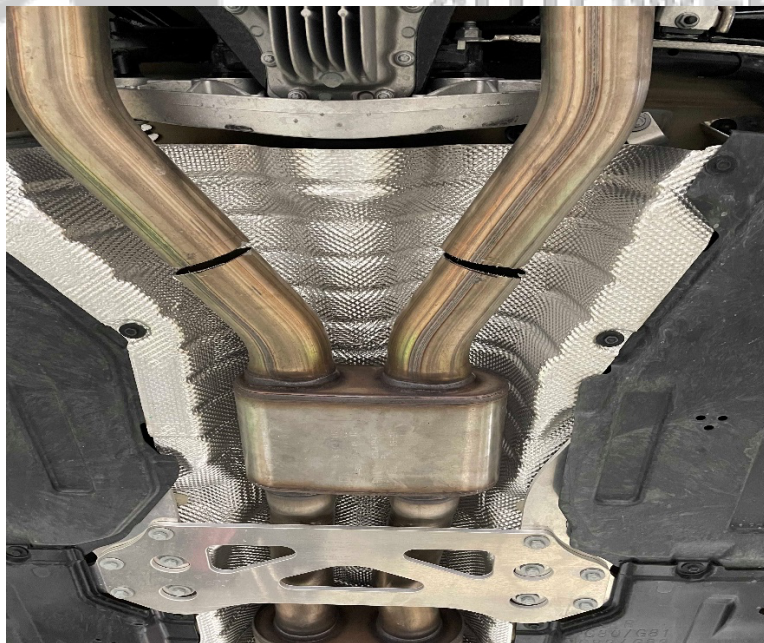
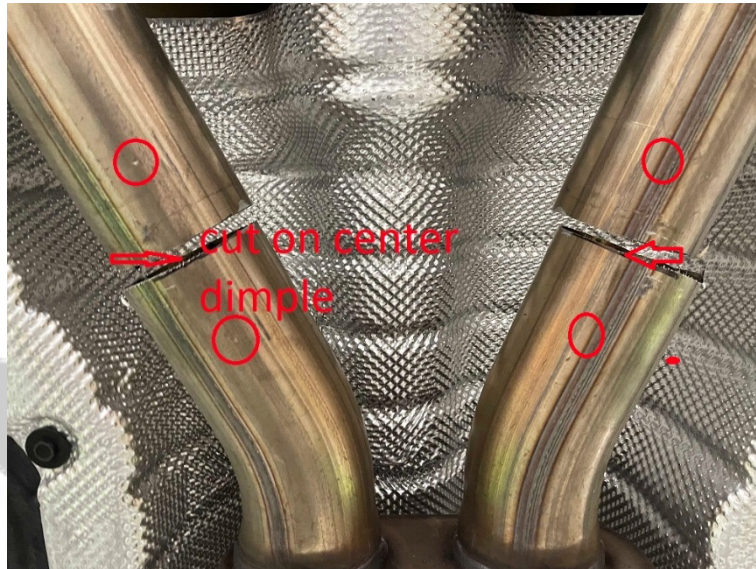


Pictured: Single Mid-Pipe, Rear A and B Pipes, Clamps, and Active Autowerke Center Plate.

- ☐ Active Autowerke G87 Single Mid-Pipe
- ☐ Active Autowerke Rear A Pipe (Rear A – Passenger Side)
- ☐ Active Autowerke Rear B Pipe (Rear B – Driver's Side)
- ☐ Ball Clamps 70mm (2)
- ☐ Torca Slip Clamps 70mm (2)
- ☐ Active Autowerke GM2 Brace (Center Plate)

Step 1:

- Separate rear exhaust from mid-section by cutting on the center dimple (BMW has 3 factory - Dimple marks on each leg of rear pan), directly behind center resonator on both the driver's side and the passenger side.



Step 2

- ☐ Disconnect Mid-section from left and right down pipes.
- ☐ Disconnect gear box exhaust hanger.



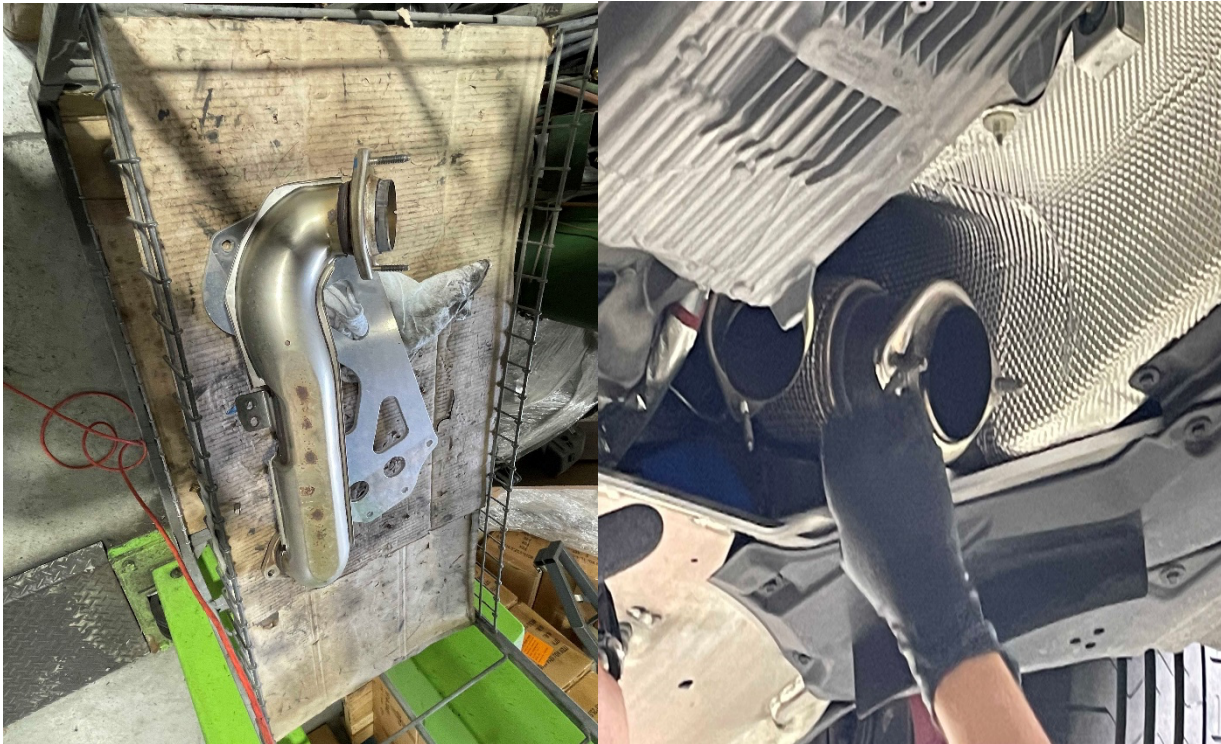
Step 3

- ☐ Remove cross brace (Do not remove bolts in cross brace holes X)
- ☐ Take down mid-section.



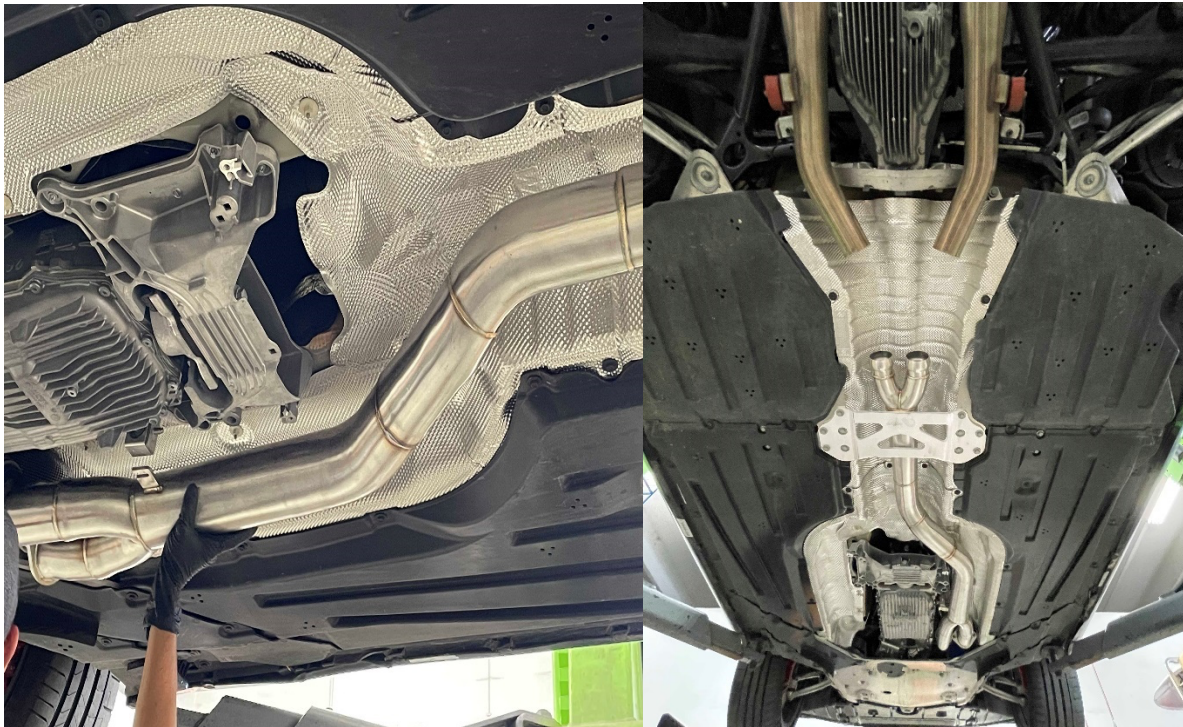
Step 4

- ☐ Remove left side down pipe cross over section.
- ☐ Make sure DP gaskets look good.



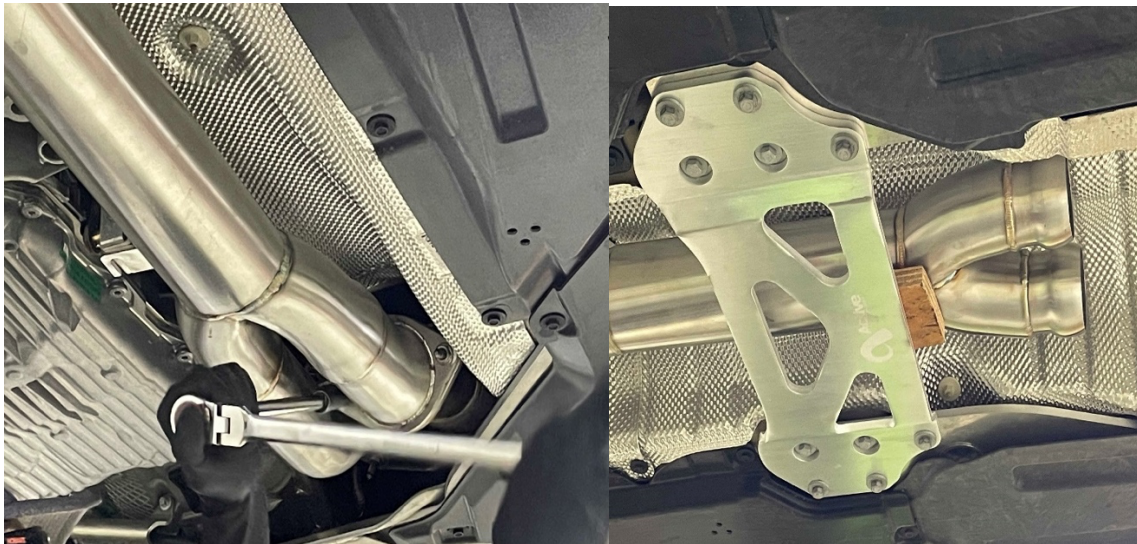
Step 5

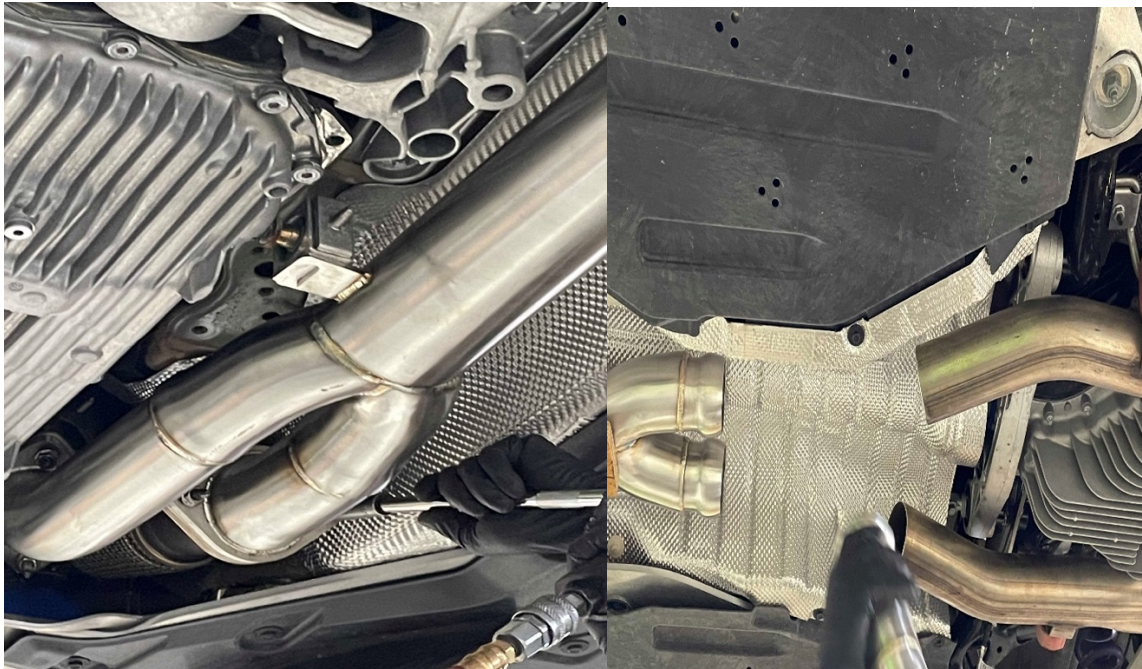
- Install AA single mid-pipe, on to down pipes, use new AA cross brace to support back section (this will ensure the proper spacing).



Step 6

- ☐ Tighten Active Autowerke cross brace and space mid pipe 1/4 – 1/2" between brace and pipe. If necessary, a 1/4" spacer can be used between right hand side of tunnel and pipe).
- ☐ Tighten left down pipe first (promotes right to left positioning of mid pipe)
- ☐ Tighten right down pipe.
- ☐ Connect gear box mount to mid pipe and tighten.
- ☐ De burr edges of rear section legs.





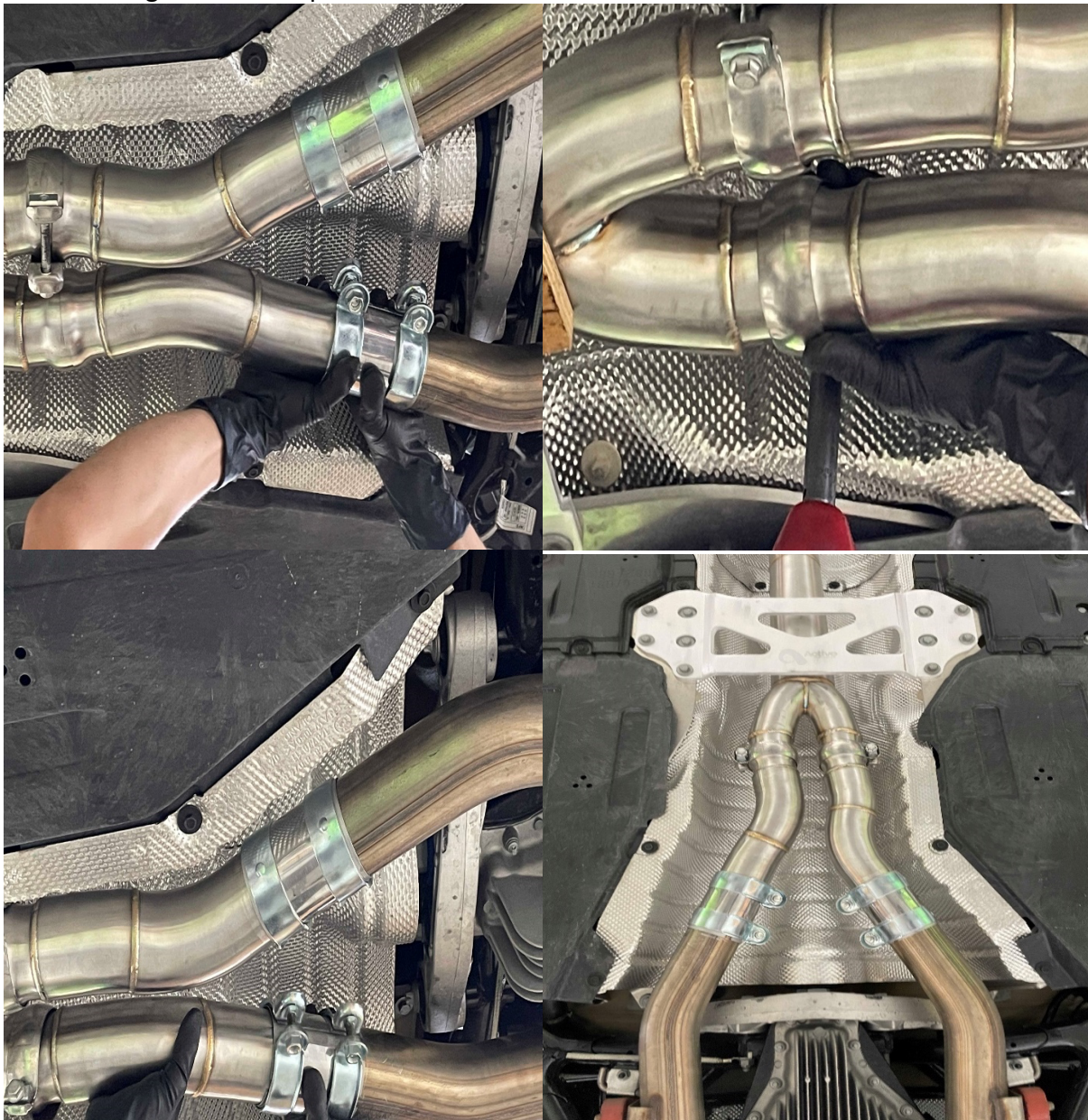
Step 7

- ☐ Slide on Torca clamps (bolts to inside) on rear section legs
- ☐ Slide on Ball clamps on mid-pipe (bolts to outside).
- ☐ Install small pipes (rotate, to desired position)



Step 8

- ☐ Install both legs and center clamps.
- ☐ Ensure the Ball Clamps are Snug (this pulls flare over the ball of the pipe).
- ☐ Position the Torca clamps and tighten.
- ☐ Re-tighten all clamps



Step 9

- ☐ Remove spacers.
- ☐ Check spacing around all piping.
- ☐ Re-Tighten as Necessary

