



F3X 435/335 REAR EXHAUST
(Install time 1.5 hour)



NOTE:

Factory rear exhaust will have to be cut to install new AA exhaust. New exhaust comes in 2 pieces, muffler pan and extension pipe.

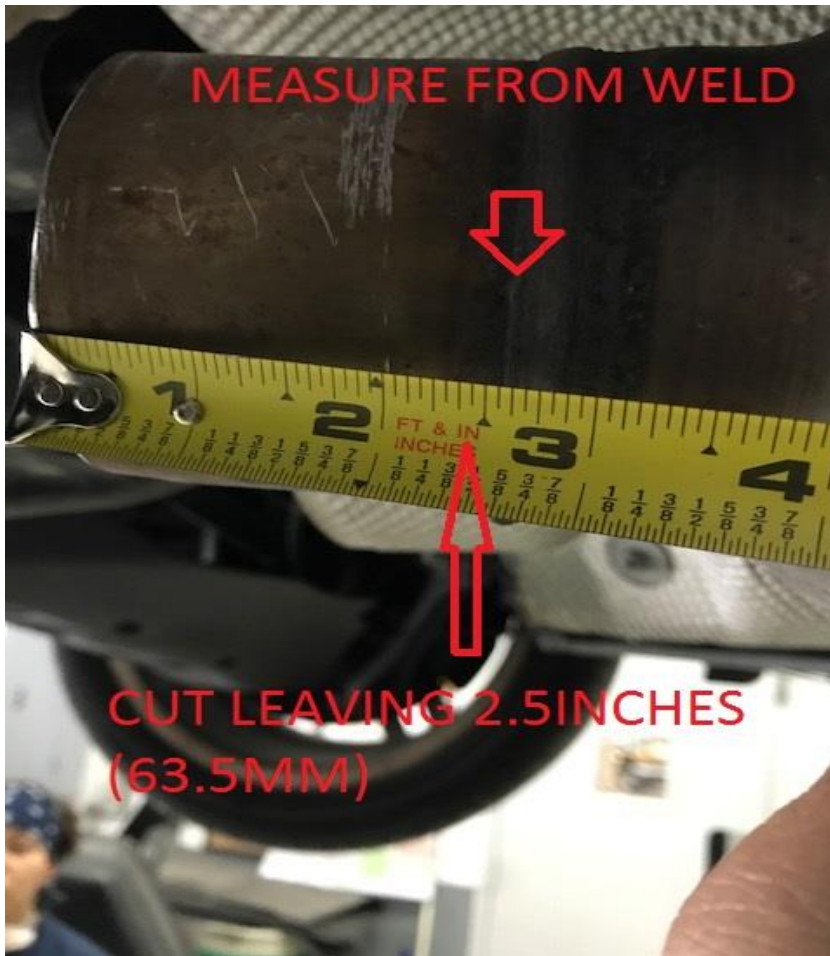


Tools:

- Sawzall or Die grinder
- 10mm
- 15mm, 14mm socket, 13mm wrench.
- Pry bar
- Tape measure



Locate center resonator (pan) to wards middle of car.

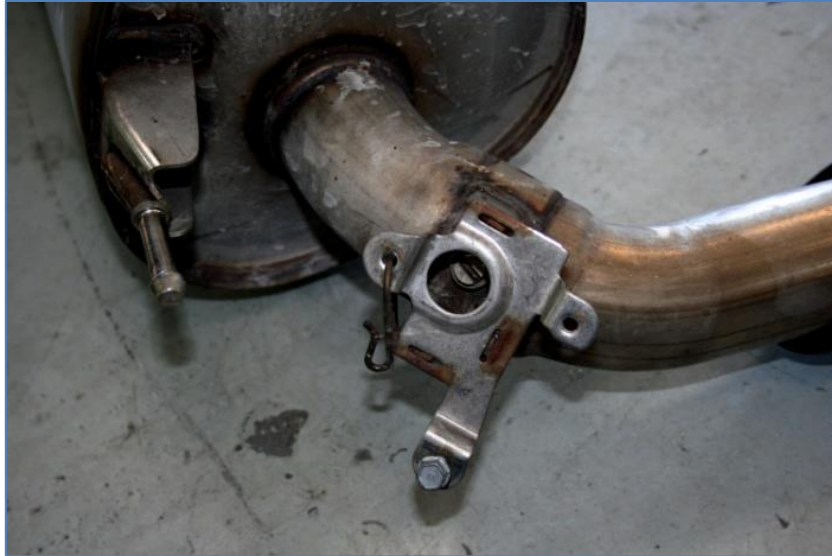


Measure 2.5 inches (63.5MM) from Weld on center pan.

Cut with Saw or die grinder.



Note: use hose clamp to make cut straight.



Remove factory pan mounts from car and let down muffler. Remove rubber mounts from muffler and transfer to new AA mounts. Remove solenoid valve



Mount and set hangers – left DRIVER's side.

Reinstall solenoid switch.

Note: this will still operate but will not be attached to anything.



Repeat for right PASSENGER side.



install extension pipe into
AA muffler

Install and
position muffler
pan, install
extension pipe



install extension pipe
over center pan lip.

Install
extension pipe
over center pan
2.5-inch lip.
Position center
pipe and
muffler. Lock
clamps.



Install exhaust tips and adjust side spacing to opening, and pan height.



Side view of tip installed.



Under carriage
view of exhaust
installed.