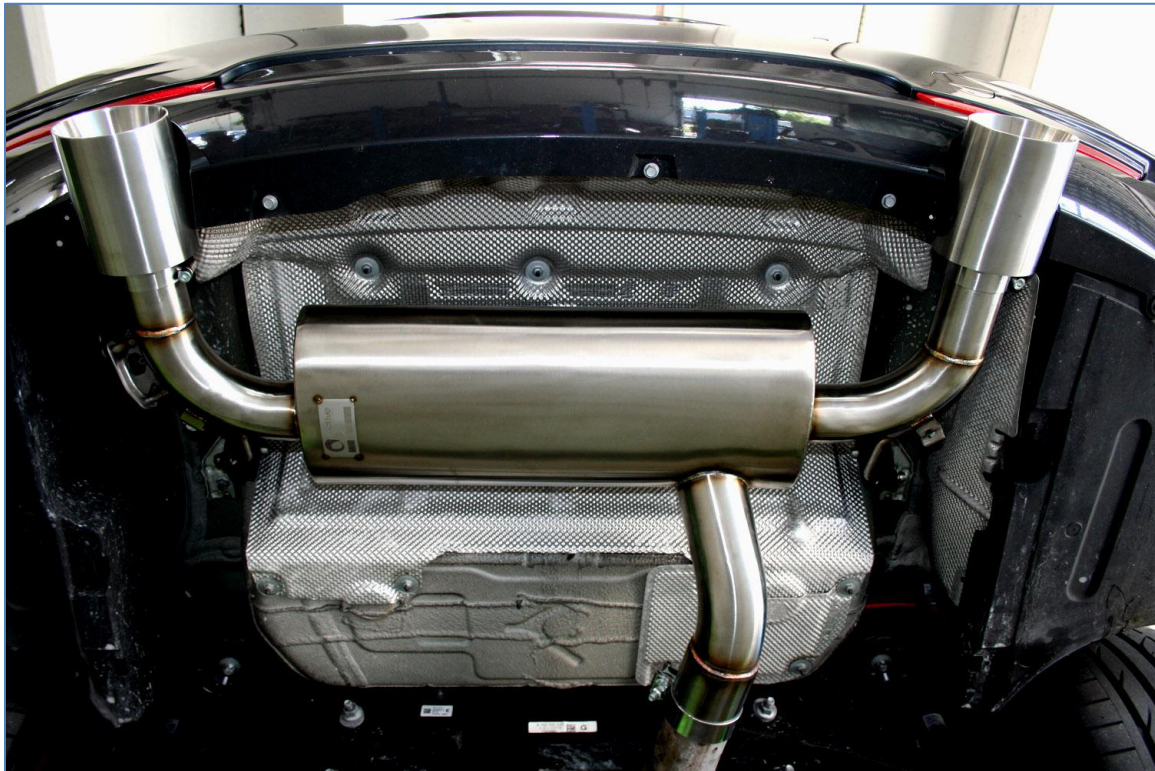




**F32 435i REAR EXHAUST**  
(Install time 1.5 hour)



**NOTE:**

Factory rear exhaust will have to be cut in order to install new AA exhaust.



To remove factory exhaust the pipe will have to be cut.

**Tools:**

- Sawzal or Die grinder
- 10mm wrench
- Pry bar
- Tape measure

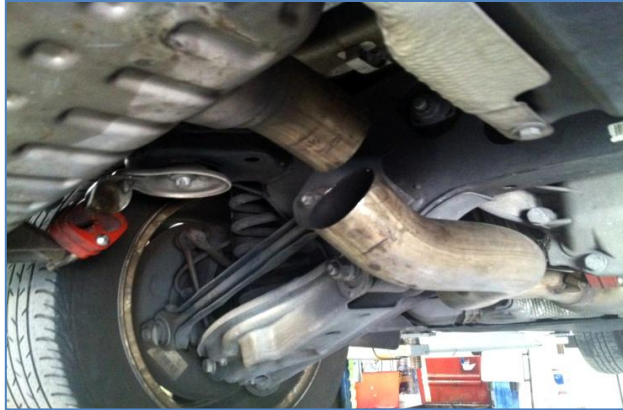


Measure 5.5 inches from back of the muffler pan by weld mark. (Bottom of pipe)

Cut with Saw or die grinder.



Remove solenoid valve



With pipe separated slide muffler out of the Red (or black) rubber hangers.

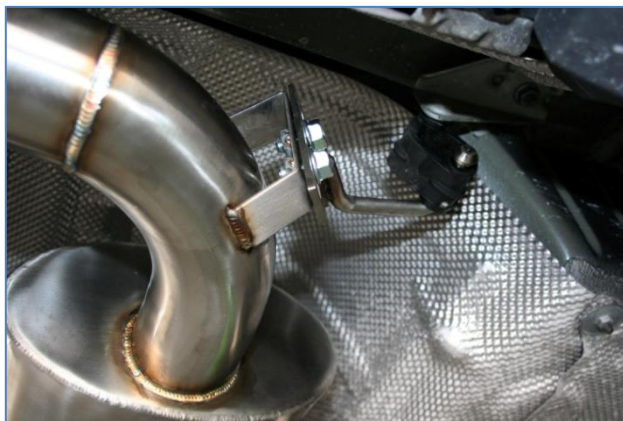
De bur end of pipe that remains on the car.



Mount and set hangers – left DRIVER's side.

Reinstall solenoid switch.

**Note:** this will still operate but will not be attached to anything.



Repeat for right PASSENGER side.





Position muffler, install TORCA Clamp and tighten.

**Note:** Bolt at top



Install exhaust tips and adjust side spacing to opening.



Side view of tip installed.



Under carriage view of  
exhaust installed.