



F30 - 2 SERIES (228) REAR EXHAUST
(Install time 1.0 hour)



NOTE:

Factory rear exhaust will have to be cut in order to install new AA exhaust.
Exhaust available with single or dual tips.



To remove factory exhaust the pipe will have to be cut.

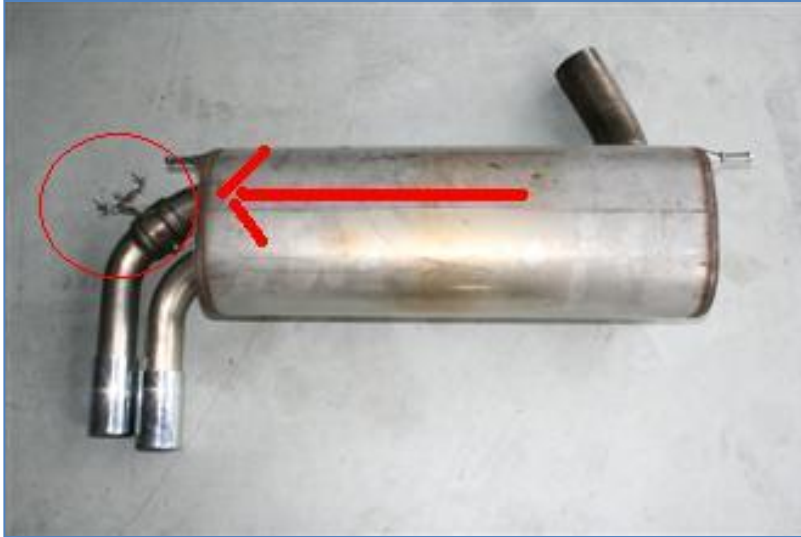
Tools:

- Sawzal or Die grinder
- 10mm wrench
- Pry bar
- Tape measure

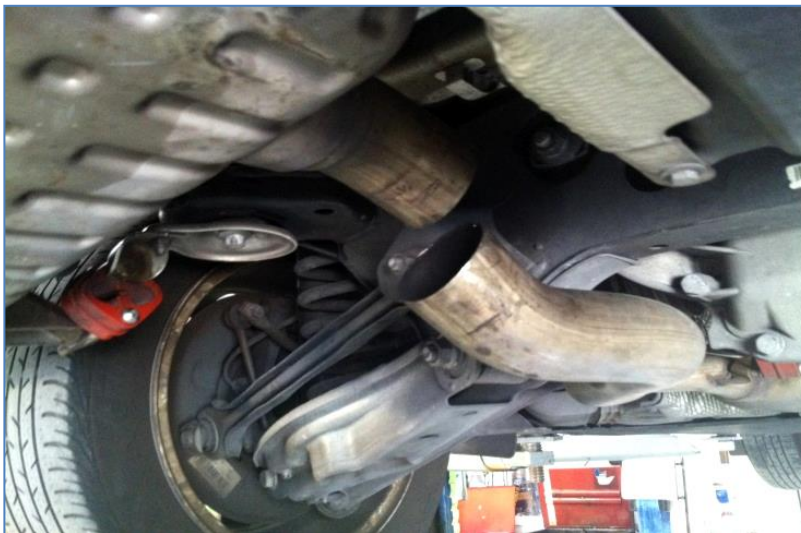


Measure 7 inches from back of the muffler pan and mark (bottom of pipe)

Cut with Saw or die grinder.



Remove solenoid valve



With pipe separated slide muffler out of the Red (or black) rubber hangers.

De bur end of pipe that remains on the car.



Leave clamps loose and slide muffler pipe onto factory pipe.



Mount and set hangers – right side



Install muffer pan onto pipe and attach left rubber mount.



Position muffler and tighten clamps.

Note: Bolt at top



Replace solenoid switch.

Note: this will still operate but will not be attached to anything.



Single tip version.

