



## **F2X M235 REAR EXHAUST**

(Install time 1.5 hour)

(USE F30 435/335 BRACKETS)



**NOTE:**

Factory rear exhaust will have to be cut to install new AA exhaust. New exhaust comes in 2 pieces, muffler pan and extension pipe.

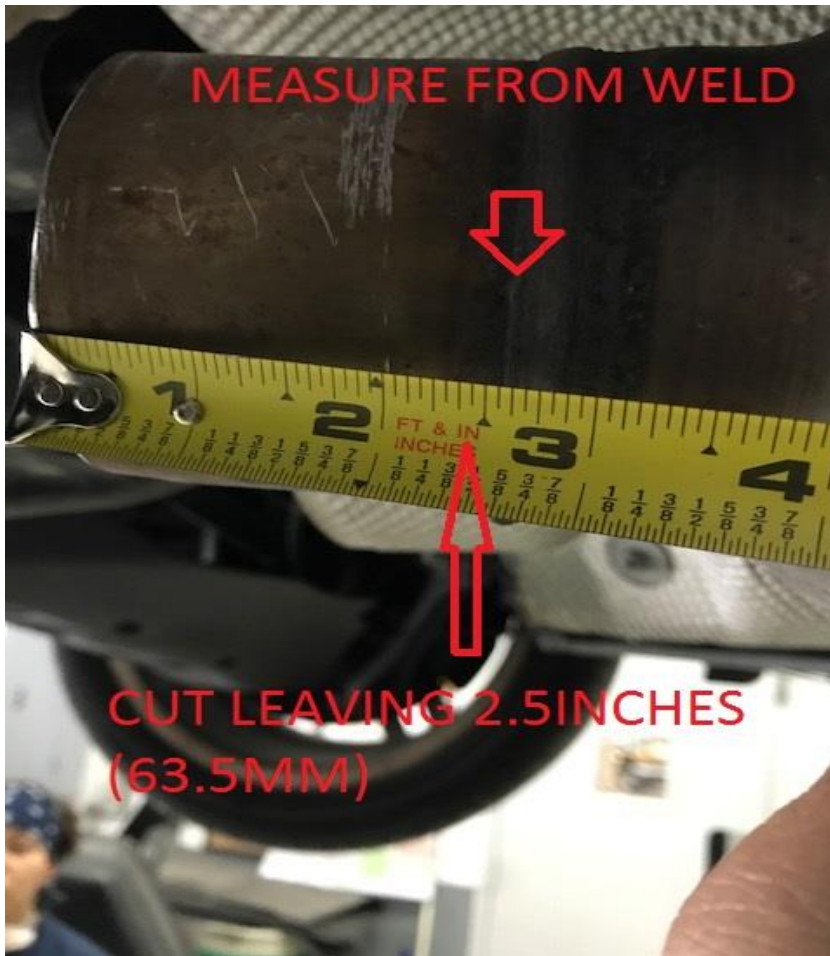


**Tools:**

- Sawzall or Die grinder
- 10mm
- 15mm, 14mm socket, 13mm wrench.
- Pry bar
- Tape measure



Locate center resonator (pan) to wards middle of car.



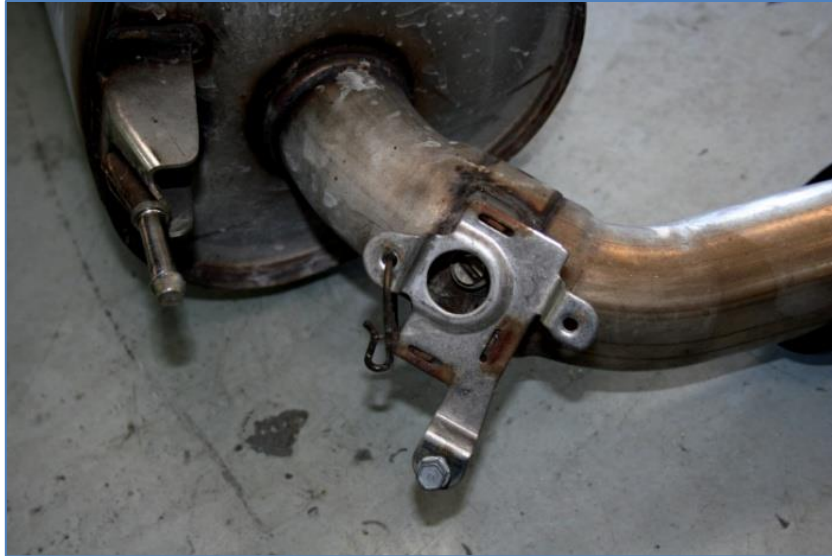
Measure 2.5 inches (63.5MM) from Weld on center pan.

Cut with Saw or die grinder.



Note: use hose clamp to make cut straight.





Remove factory pan mounts from car and let down muffler. Remove rubber mounts from muffler and transfer to new AA mounts. Remove solenoid valve



Mount and set hangers – left DRIVER's side.

Reinstall solenoid switch.

**Note:** this will still operate but will not be attached to anything.



Repeat for right PASSENGER side.



Install and position muffler pan, install extension pipe



Install extension pipe over center pan 2.5-inch lip. Position center pipe and muffler. Lock clamps.



Install exhaust tips and adjust side spacing to opening, and pan height.



Side view of tip installed.





Under carriage  
view of exhaust  
installed.