



INSTRUCTIONS

**BMW E90, E92
M3 2007 -**

Active Autowerke SPORT REAR Exhaust



Tools Needed:

- Metric Sockets
- 3/8" Ratchet, extension
- Metric wrenches
- 8mm Allen
- Needle nose pliers
- Large Screwdriver
- WD-40 lubricant
- Lift recommended



Remove factory rear muffler



Disconnect rear valance from rear muffler support using a 8mm socket



Disconnect exhaust hanger from body



Disconnect rear muffler clamp



Disconnecting rear muffler clamp



Disconnecting rear hanger on right side
Ground strap will not be reused



Disconnecting rear hanger on left side
Ground strap will not be reused



Disconnect rear center bracket from body. Assembly will be removed with the factory muffler



With the help of a friend, start to remove the factory rear muffler.
Watch for interference from the rear valance while removing



Factory rear muffler being removed with center bracket still attached



Factory exhaust removed



Using a needle nose pliers, pry away the RED rubbers from the factory muffler



Still prying away the RED rubbers



Removing away from the factory muffler



Disconnect the right exhaust hanger from the factory rear muffler



Components of the SPORT rear exhaust.



Transfer and install right (passenger side) exhaust hanger



Transfer and install left (driver's side) exhaust hanger



Transfer factory mounts to pipes



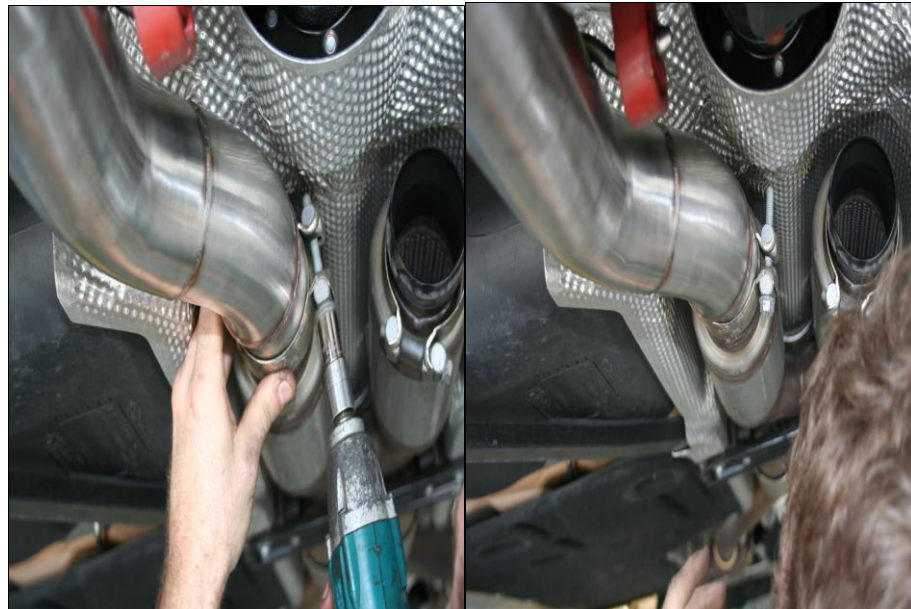
Transfer factory mounts to pipes



Install exhaust pipe to factory X-PIPE



Repeat for other side



Catch muffler pipe to X-pipe with the factory clamp.
Just snug tight at this time. Will need to rotate and move around later.



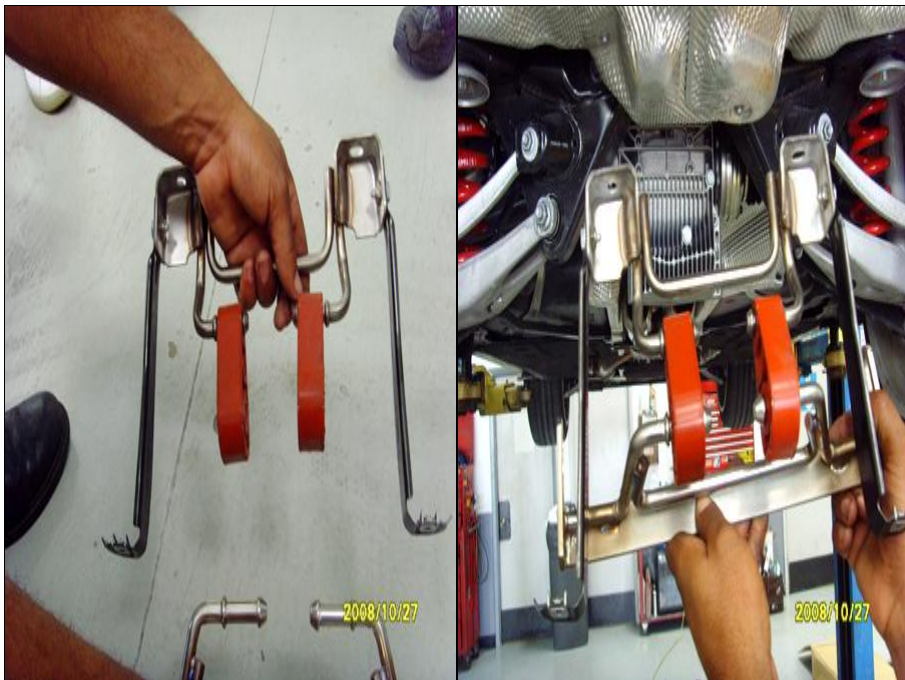
Mount hanger bracket to existing factory location.



Another view showing installed



Transfer existing rubber mounts to new SPORT center bar.



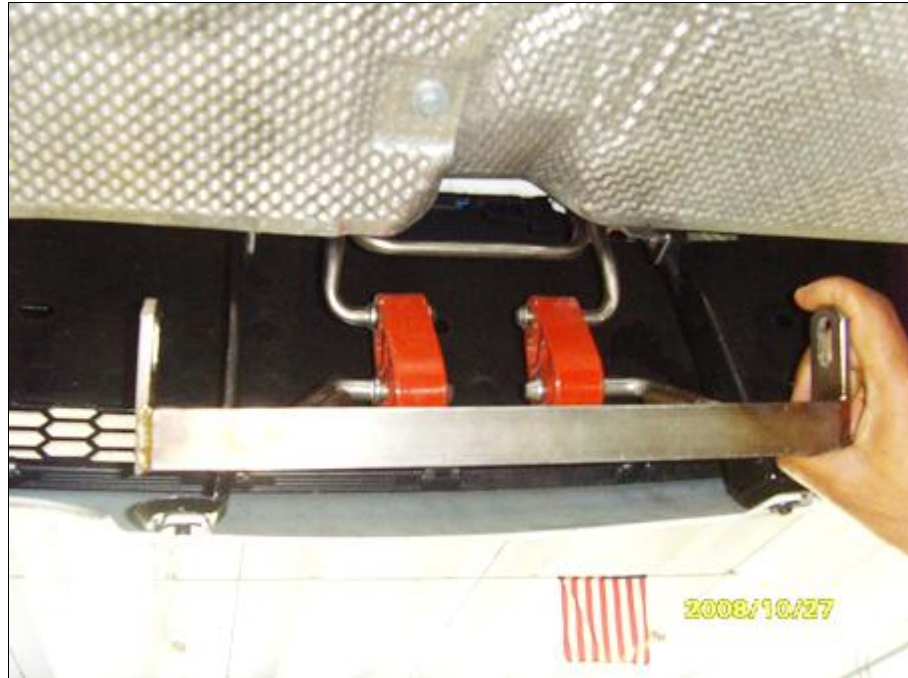
Center bar ready for re-installation.



Center exhaust bracket installed to body



Installed to the body



Another view installed



and waiting for the Active Autowerke rear muffler



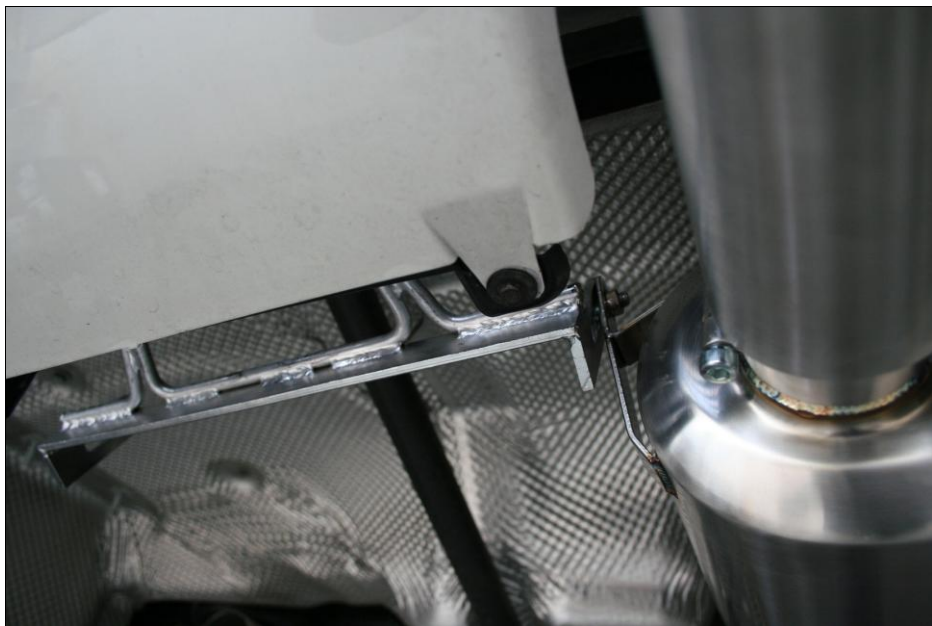
Slip on the TORCA Clamps.
These clamps will help secure the rear muffler can
to the pipes.



Install the right (passenger side) muffler.
Repeat the same for the left (driver's side) muffler.



Install the side exhaust mount



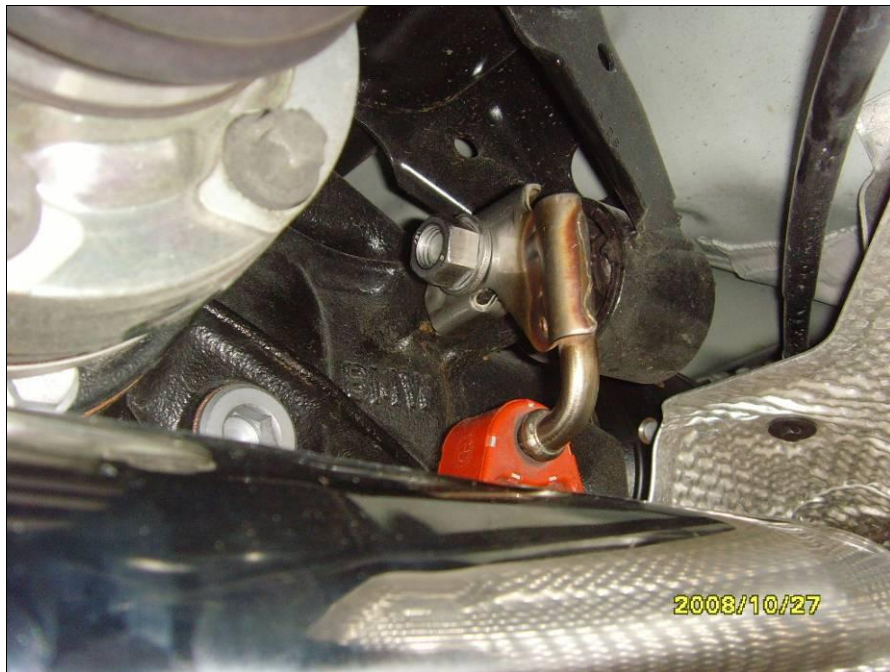
Connect the rear muffler can to the center bar with the mounting hardware

DO NOT tighten at this time, ONLY SNUG FIT.

Will need exhausts pipes to rotate for proper tip alignment



Slide the TORCA clamp onto the muffler can. Snug fit at this time.
Will require rotation before final adjustment.



Install the front RED rubber hanger to the body and tighten
– Left and Right sides



Connect the left rear Active Autowerke muffler to the center exhaust bracket



Connect the right rear Active Autowerke muffler to the center exhaust bracket



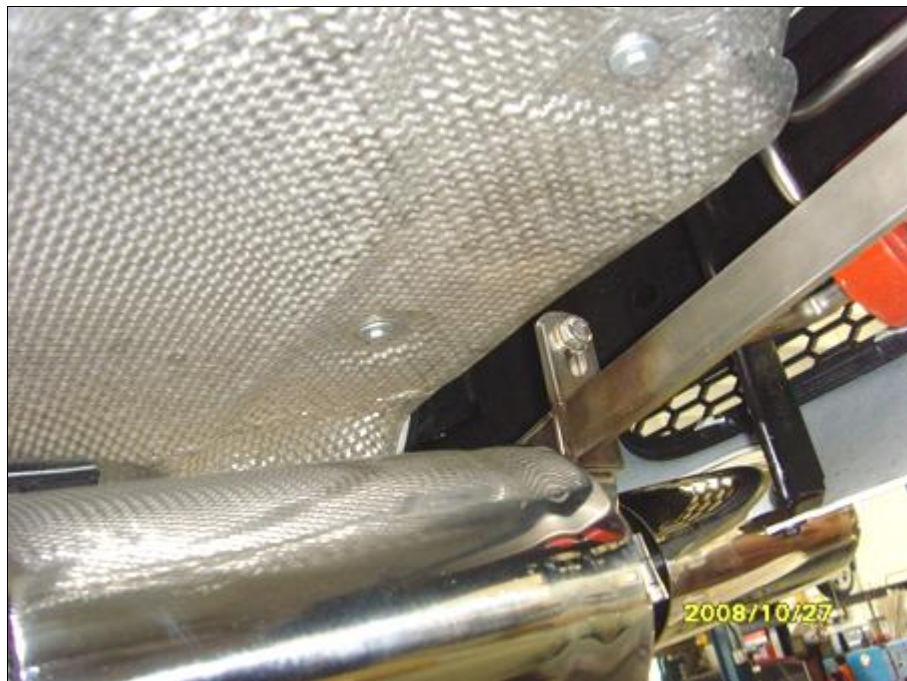
Push up exhaust until tips touch rear valance and tighten bolt on center exhaust bracket to maintain this position



Or the use of a mechanical support to maintain installed height



Tips should be touching the rear valance like shown



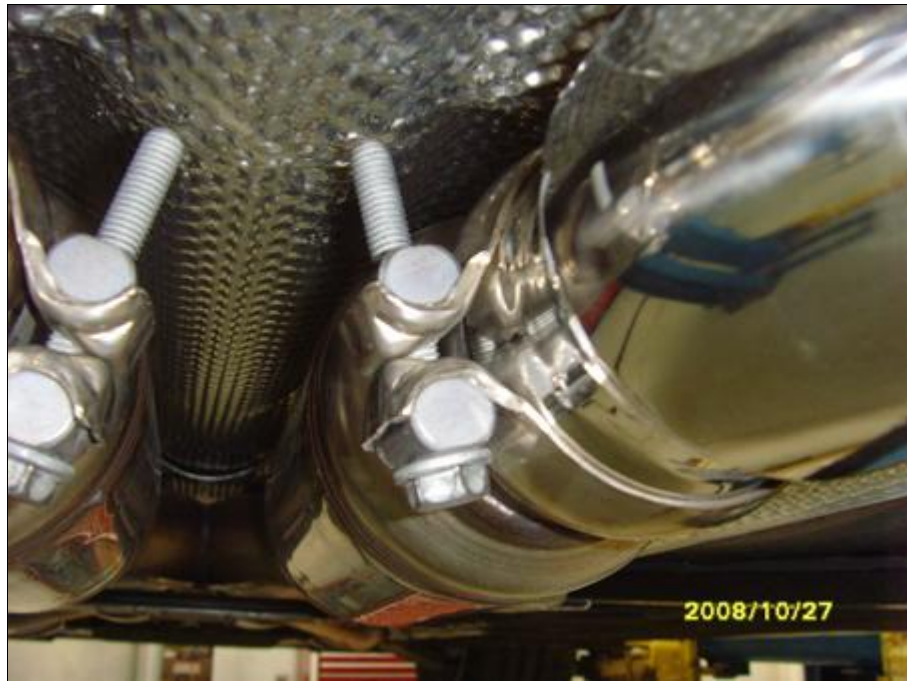
Tighten bolt on center support bracket to secure and hold the desired installed height. Repeat the same for the other side



When pressure is released, the rubber hangers on the center exhaust bracket will relax making a clearance space like shown



If tips side clearance is off and the exhaust needs to be rotated, use a large screwdriver. Wedge screwdriver between the tips and rotate to desired location



Tighten front exhaust clamps to secure exhaust position.
This will secure the level look of the installed tips



Slacked the 8mm allen bolt and adjust the tips IN or OUT
to your desired extension



Once you have the desired spacing, clearance and look.
You can now tighten all the mounting points.



Tighten to you preference



Another installed extension



Staggered look



Tighten the front pipe clamps



Tighten the TORCA clamps

CONVERTIBLE Models:

If your model is a convertible, the exhaust will fit but only needs a BUSHING to make the proper clearance.

There is a V bar located on the convertible that causes the interference. This bushing creates the necessary clearance.





- Check all clearance and tightness of all clamps and related hardware
- Check for proper rear muffler tips alignment to rear valance opening both height and centering
- Make adjustment as needed then tighten all bolts and clamps
- Perform road test

Thanks for purchasing and installing a Active Autowerke exhaust system. Being all stainless you can enjoy many years from this performance product.

If you have any questions, please contact anyone at Active Autowerke:

Active Autowerke
9940 SW 168 Terrace
Miami, Florida 33157, USA
Phone : 305.233.9300 - www.activeautowerke.com -
info@activeautowerke.com